



F19A1 rabbit pAb

Cat No.:ES10891

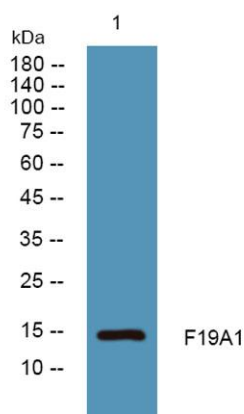
For research use only

Overview

Product Name	F19A1 rabbit pAb
Host species	Rabbit
Applications	WB;ELISA
Species Cross-Reactivity	Human;Mouse
Recommended dilutions	WB 1:500-2000 ELISA 1:5000-20000
Immunogen	Synthesized peptide derived from part region of human protein
Specificity	F19A1 Polyclonal Antibody detects endogenous levels of protein.
Formulation	Liquid in PBS containing 50% glycerol, 0.5% BSA and 0.02% sodium azide.
Storage	Store at -20°C. Avoid repeated freeze-thaw cycles.
Protein Name	Protein FAM19A1 (Chemokine-like protein TFAA-1)
Gene Name	FAM19A1 TFAA1
Cellular localization	Secreted .
Purification	The antibody was affinity-purified from rabbit antiserum by affinity-chromatography using epitope-specific immunogen.
Clonality	Polyclonal
Concentration	1 mg/ml
Observed band	14kD
Human Gene ID	407738
Human Swiss-Prot Number	Q7Z5A9
Alternative Names	
Background	family with sequence similarity 19 member A1, C-C motif chemokine like(FAM19A1) Homo sapiens This gene is a member of the TFAA family which is composed of five highly homologous genes that encode small secreted proteins. These proteins contain conserved cysteine residues at fixed positions, and are distantly related to MIP-1alpha, a member of the CC-chemokine family. The TFAA proteins are predominantly expressed in specific



regions of the brain, and are postulated to function as brain-specific chemokines or neurokines that act as regulators of immune and nervous cells.
[provided by RefSeq, Jul 2008],



Western blot analysis of lysates from PC12 cells, primary antibody was diluted at 1:1000, 4° over night

