



NRBP rabbit pAb

Cat No.:ES10837

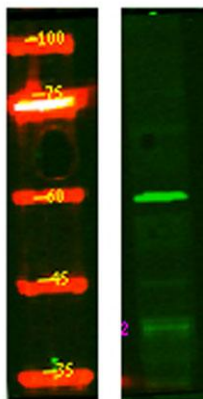
For research use only

Overview

Product Name	NRBP rabbit pAb
Host species	Rabbit
Applications	WB;ELISA
Species Cross-Reactivity	Human;Mouse
Recommended dilutions	WB 1:500-2000 ELISA 1:5000-20000
Immunogen	Synthesized peptide derived from part region of human protein
Specificity	NRBP Polyclonal Antibody detects endogenous levels of protein.
Formulation	Liquid in PBS containing 50% glycerol, 0.5% BSA and 0.02% sodium azide.
Storage	Store at -20°C. Avoid repeated freeze-thaw cycles.
Protein Name	Nuclear receptor-binding protein
Gene Name	NRBP1 BCON3 NRBP
Cellular localization	Cytoplasm, cell cortex . Endomembrane system . Cell projection, lamellipodium . Colocalizes with activated RAC3 to endomembranes and at the cell periphery in lamellipodia.
Purification	The antibody was affinity-purified from rabbit antiserum by affinity-chromatography using epitope-specific immunogen.
Clonality	Polyclonal
Concentration	1 mg/ml
Observed band	58kD
Human Gene ID	29959
Human Swiss-Prot Number	Q9UHY1
Alternative Names	
Background	caution:Author states that kinase activity observed in PubMed:11956649 may be due to sample contamination. This protein is predicted to be catalytically inactive.,domain:The protein kinase domain is predicted to be catalytically inactive.,function:May play a role in subcellular



trafficking between the endoplasmic reticulum and Golgi apparatus through interactions with the Rho-type GTPases. Binding to the NS3 protein of dengue virus type 2 appears to subvert this activity into the alteration of the intracellular membrane structure associated with flaviviral replication.,similarity:Belongs to the protein kinase superfamily. Ser/Thr protein kinase family.,similarity:Contains 1 protein kinase domain.,subcellular location:Colocalizes with activated RAC3 to endomembranes and at the cell periphery in lamellipodia.,subunit:Homodimer. Binds to MLF1, recruiting a serine kinase which phosphorylates both itself and MLF1. Phosphorylated MLF1 binds to YWHAZ and is retained in the cytoplasm.,tissue specificity:Ubiquitously expressed in all tissues examined with high levels in the testis.,



Western Blot analysis of HEK293 lysis, using primary antibody at 1:1000 dilution. Secondary antibody(catalog#:RS23920) was diluted at 1:10000

