

CSK22 rabbit pAb

Cat No.:ES10810

For research use only

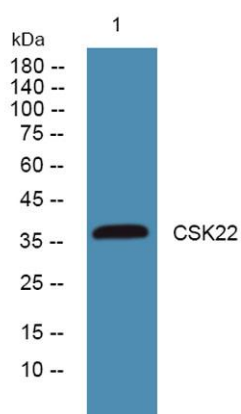
Overview

Product Name	CSK22 rabbit pAb
Host species	Rabbit
Applications	WB;ELISA
Species Cross-Reactivity	Human;Mouse
Recommended dilutions	WB 1:500-2000 ELISA 1:5000-20000
Immunogen	Synthesized peptide derived from part region of human protein
Specificity	CSK22 Polyclonal Antibody detects endogenous levels of protein.
Formulation	Liquid in PBS containing 50% glycerol, 0.5% BSA and 0.02% sodium azide.
Storage	Store at -20°C. Avoid repeated freeze-thaw cycles.
Protein Name	Casein kinase II subunit alpha' (CK II alpha') (EC 2.7.11.1)
Gene Name	CSNK2A2 CK2A2
Cellular localization	Nucleus . Cytoplasm . Interaction with SIRT6 prevents translocation into the nucleus. .
Purification	The antibody was affinity-purified from rabbit antiserum by affinity-chromatography using epitope-specific immunogen.
Clonality	Polyclonal
Concentration	1 mg/ml
Observed band	38kD
Human Gene ID	1459
Human Swiss-Prot Number	P19784
Alternative Names	
Background	catalytic activity:ATP + a protein = ADP + a phosphoprotein.,function:Casein kinases are operationally defined by their preferential utilization of acidic proteins such as caseins as substrates. The alpha and alpha' chains contain the catalytic site. Participates in Wnt signaling. CK2 phosphorylates 'Ser-392' of p53/TP53 following UV





irradiation.,similarity:Belongs to the protein kinase superfamily. Ser/Thr protein kinase family. CK2 subfamily.,similarity:Contains 1 protein kinase domain.,subunit:Tetramer composed of an alpha chain, an alpha' and two beta chains. Also component of a CK2-SPT16-SSRP1 complex composed of SSRP1, SUPT16H, CSNK2A1, CSNK2A2 and CSNK2B, the complex associating following UV irradiation.,



Western blot analysis of lysates from K562 cells, primary antibody was diluted at 1:1000, 4°over night

