

IL36G rabbit pAb

Cat No.:ES10711

For research use only

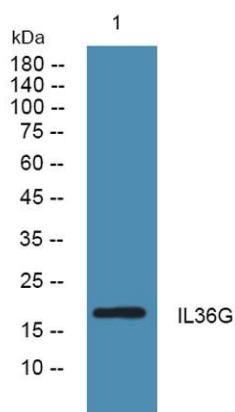
Overview

Product Name	IL36G rabbit pAb
Host species	Rabbit
Applications	WB;ELISA
Species Cross-Reactivity	Human;Rat;Mouse;
Recommended dilutions	WB 1:500-2000 ELISA 1:5000-20000
Immunogen	Synthesized peptide derived from part region of human protein AA range: 31-80
Specificity	IL36G Polyclonal Antibody detects endogenous levels of protein.
Formulation	Liquid in PBS containing 50% glycerol, 0.5% BSA and 0.02% sodium azide.
Storage	Store at -20°C. Avoid repeated freeze-thaw cycles.
Protein Name	Interleukin-36 gamma (IL-1-related protein 2) (IL-1RP2) (Interleukin-1 epsilon) (IL-1 epsilon) (Interleukin-1 family member 9) (IL-1F9) (Interleukin-1 homolog 1) (IL-1H1)
Gene Name	IL36G IL1E IL1F9 IL1H1 IL1RP2 UNQ2456/PRO5737
Cellular localization	Cytoplasm . Secreted . The secretion is dependent on protein unfolding and facilitated by the cargo receptor TMED10; it results in protein translocation from the cytoplasm into the ERGIC (endoplasmic reticulum-Golgi intermediate compartment) followed by v
Purification	The antibody was affinity-purified from rabbit antiserum by affinity-chromatography using epitope-specific immunogen.
Clonality	Polyclonal
Concentration	1 mg/ml
Observed band	18kD
Human Gene ID	56300
Human Swiss-Prot Number	Q9NZH8
Alternative Names	
Background	The protein encoded by this gene is a member of





the interleukin 1 cytokine family. The activity of this cytokine is mediated by interleukin 1 receptor-like 2 (IL1RL2/IL1R-rp2), and is specifically inhibited by interleukin 1 family, member 5 (IL1F5/IL-1 delta). Interferon-gamma, tumor necrosis factor-alpha and interleukin 1, beta (IL1B) are reported to stimulate the expression of this cytokine in keratinocytes. The expression of this cytokine in keratinocytes can also be induced by a contact hypersensitivity reaction or herpes simplex virus infection. This gene and eight other interleukin 1 family genes form a cytokine gene cluster on chromosome 2. Two alternatively spliced transcript variants encoding different isoforms have been found for this gene. [provided by RefSeq, Jun 2013],



Western blot analysis of lysates from KB cells, primary antibody was diluted at 1:1000, 4°over night

