

# MRCKG rabbit pAb

Cat No.:ES10590

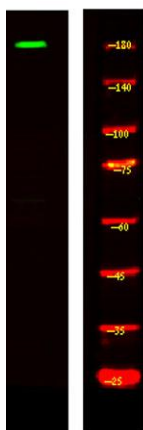
For research use only

## Overview

Product Name	MRCKG rabbit pAb
Host species	Rabbit
Applications	WB;ELISA
Species Cross-Reactivity	Human;Rat;Mouse;
Recommended dilutions	WB 1:500-2000 ELISA 1:5000-20000
Immunogen	Synthesized peptide derived from human protein . at AA range: 1370-1450
Specificity	MRCKG Polyclonal Antibody detects endogenous levels of protein.
Formulation	Liquid in PBS containing 50% glycerol, 0.5% BSA and 0.02% sodium azide.
Storage	Store at -20°C. Avoid repeated freeze-thaw cycles.
Protein Name	Serine/threonine-protein kinase MRCK gamma (EC 2.7.11.1) (CDC42-binding protein kinase gamma) (DMPK-like gamma) (Myotonic dystrophy kinase-related CDC42-binding kinase gamma) (MRCK gamma) (MRCKG) (Myo
Gene Name	CDC42BPG DMPK2
Cellular localization	Cytoplasm . Concentrates at the leading edge of cells.
Purification	The antibody was affinity-purified from rabbit antiserum by affinity-chromatography using epitope-specific immunogen.
Clonality	Polyclonal
Concentration	1 mg/ml
Observed band	170kD
Human Gene ID	55561
Human Swiss-Prot Number	Q6DT37
Alternative Names	
Background	catalytic activity:ATP + a protein = ADP + a phosphoprotein.,cofactor:Magnesium.,enzyme regulation:Maintained in an inactive, closed conformation by an interaction between the kinase



domain and the negative autoregulatory C-terminal coiled-coil region. Agonist binding to the phorbol ester binding site disrupts this, releasing the kinase domain to allow N-terminus-mediated dimerization and kinase activation by transautophosphorylation.,function:May act as a downstream effector of CDC42 in cytoskeletal reorganization. Contributes to the actomyosin contractility required for cell invasion, through the regulation of MYPT1 and thus MLC2 phosphorylation.,similarity:Belongs to the protein kinase superfamily. AGC Ser/Thr protein kinase family. DMPK subfamily.,similarity:Contains 1 AGC-kinase C-terminal domain.,similarity:Contains 1 CNH domain.,similarity:Contains 1 CRIB domain.,similarity:Contains 1 PH domain.,similarity:Contains 1 phorbol-ester/DAG-type zinc finger.,similarity:Contains 1 protein kinase domain.,subcellular location:Concentrates at the leading edge of cells.,subunit:Homodimer and homotetramer via the coiled coil regions. Interacts tightly with GTP-bound but not GDP-bound CDC42.,tissue specificity:Expressed in heart and skeletal muscle.,



Western Blot analysis of HEK293 lysis, using primary antibody at 1:1000 dilution. Secondary antibody(catalog#:RS23920) was diluted at 1:10000

