



ATOH8 rabbit pAb

Cat No.:ES10575

For research use only

Overview

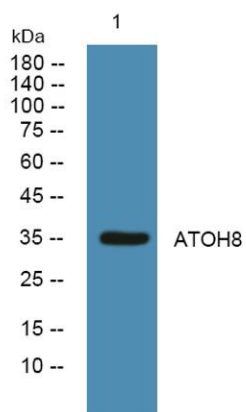
Product Name	ATOH8 rabbit pAb
Host species	Rabbit
Applications	WB;ELISA
Species Cross-Reactivity	Human;Rat;Mouse;
Recommended dilutions	WB 1:500-2000 ELISA 1:5000-20000
Immunogen	Synthesized peptide derived from part region of human protein
Specificity	ATOH8 Polyclonal Antibody detects endogenous levels of protein.
Formulation	Liquid in PBS containing 50% glycerol, 0.5% BSA and 0.02% sodium azide.
Storage	Store at -20°C. Avoid repeated freeze-thaw cycles.
Protein Name	Protein atonal homolog 8 (Class A basic helix-loop-helix protein 21) (bHLHa21) (Helix-loop-helix protein hATH-6) (hATH6)
Gene Name	ATOH8 ATH6 BHLHA21
Cellular localization	Nucleus . Nucleus speckle . Cytoplasm .
Purification	The antibody was affinity-purified from rabbit antiserum by affinity-chromatography using epitope-specific immunogen.
Clonality	Polyclonal
Concentration	1 mg/ml
Observed band	35kD
Human Gene ID	84913
Human Swiss-Prot Number	Q96SQ7
Alternative Names	
Background	function:Putative transcription factor. May be implicated in specification and differentiation of neuronal cell lineages in the brain. May participate in kidney development and may be involved in podocyte differentiation.,similarity:Contains 1 basic helix-loop-helix (bHLH) domain.,subunit:Efficient DNA binding requires dimerization with another





ELK Biotechnology

bHLH protein.,tissue specificity:Expressed in lung, liver, kidney, heart and pancreas. Expressed in endothel of umbilical vessels.,



Western blot analysis of lysates from SW480 cells, primary antibody was diluted at 1:1000, 4°over night



+86-27-59760950

ELKbio@ELKbiotech.com

www.elkbiotech.com

23-2, No.388 Gaoxin 2nd Road,Wuhan East Lake Hi-tech Development Zone, Hubei , P.R.C