

RAD9B rabbit pAb

Cat No.:ES10564

For research use only

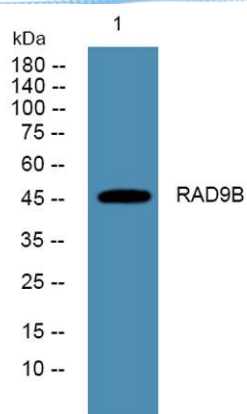
Overview

Product Name	RAD9B rabbit pAb
Host species	Rabbit
Applications	WB;ELISA
Species Cross-Reactivity	Human;Rat;Mouse;
Recommended dilutions	WB 1:500-2000 ELISA 1:5000-20000
Immunogen	Synthesized peptide derived from part region of human protein
Specificity	RAD9B Polyclonal Antibody detects endogenous levels of protein.
Formulation	Liquid in PBS containing 50% glycerol, 0.5% BSA and 0.02% sodium azide.
Storage	Store at -20°C. Avoid repeated freeze-thaw cycles.
Protein Name	Cell cycle checkpoint control protein RAD9B (DNA repair exonuclease rad9 homolog B) (hRAD9B)
Gene Name	RAD9B
Cellular localization	nucleoplasm,checkpoint clamp complex,
Purification	The antibody was affinity-purified from rabbit antiserum by affinity-chromatography using epitope-specific immunogen.
Clonality	Polyclonal
Concentration	1 mg/ml
Observed band	46kD
Human Gene ID	144715
Human Swiss-Prot Number	Q6WBX8
Alternative Names	
Background	similarity:Belongs to the rad9 family.,subunit:Interacts with HUS1, HUS1B, RAD1, RAD9A and RAD17.,tissue specificity:Expressed in testis and skeletal muscle.,





ELK Biotechnology



Western blot analysis of lysates from PC12 cells, primary antibody was diluted at 1:1000, 4° over night



+86-27-59760950

ELKbio@ELKbiotech.com

www.elkbiotech.com

23-2, No.388 Gaoxin 2nd Road, Wuhan East Lake Hi-tech Development Zone, Hubei, P.R.C.