

# MK12 rabbit pAb

Cat No.:ES10560

For research use only

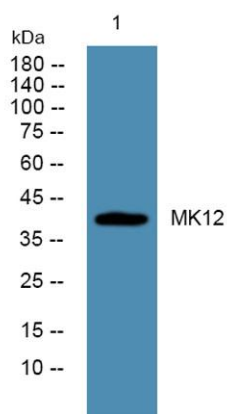
## Overview

Product Name	MK12 rabbit pAb
Host species	Rabbit
Applications	WB;ELISA
Species Cross-Reactivity	Human;Mouse;Rat
Recommended dilutions	WB 1:500-2000 ELISA 1:5000-20000
Immunogen	Synthesized peptide derived from human protein . at AA range: 70-150
Specificity	MK12 Polyclonal Antibody detects endogenous levels of protein.
Formulation	Liquid in PBS containing 50% glycerol, 0.5% BSA and 0.02% sodium azide.
Storage	Store at -20°C. Avoid repeated freeze-thaw cycles.
Protein Name	Mitogen-activated protein kinase 12 (MAP kinase 12) (MAPK 12) (EC 2.7.11.24) (Extracellular signal-regulated kinase 6) (ERK-6) (Mitogen-activated protein kinase p38 gamma) (MAP kinase p38 gamma) (Stre
Gene Name	MAPK12 ERK6 SAPK3
Cellular localization	Cytoplasm. Nucleus. Mitochondrion. Mitochondrial when associated with SH3BP5. In skeletal muscle colocalizes with SNTA1 at the neuromuscular junction and throughout the sarcolemma (By similarity). .
Purification	The antibody was affinity-purified from rabbit antiserum by affinity-chromatography using epitope-specific immunogen.
Clonality	Polyclonal
Concentration	1 mg/ml
Observed band	40kD
Human Gene ID	6300
Human Swiss-Prot Number	P53778
Alternative Names	
Background	Activation of members of the mitogen-activated





protein kinase family is a major mechanism for transduction of extracellular signals. Stress-activated protein kinases are one subclass of MAP kinases. The protein encoded by this gene functions as a signal transducer during differentiation of myoblasts to myotubes. [provided by RefSeq, Jul 2008],



Western blot analysis of lysates from DU145 cells, primary antibody was diluted at 1:1000, 4° over night

