



CD5L rabbit pAb

Cat No.:ES10519

For research use only

Overview

Product Name	CD5L rabbit pAb
Host species	Rabbit
Applications	WB;ELISA
Species Cross-Reactivity	Human;Mouse
Recommended dilutions	WB 1:500-2000 ELISA 1:5000-20000
Immunogen	Synthesized peptide derived from human protein . at AA range: 220-300
Specificity	CD5L Polyclonal Antibody detects endogenous levels of protein.
Formulation	Liquid in PBS containing 50% glycerol, 0.5% BSA and 0.02% sodium azide.
Storage	Store at -20°C. Avoid repeated freeze-thaw cycles.
Protein Name	CD5 antigen-like (CT-2) (IgM-associated peptide) (SP-alpha)
Gene Name	CD5L API6 UNQ203/PRO229
Cellular localization	Secreted . Cytoplasm . Secreted by macrophages and circulates in the blood (PubMed:24223991, PubMed:24804991). Transported in the cytoplasm via CD36-mediated endocytosis (By similarity). .
Purification	The antibody was affinity-purified from rabbit antiserum by affinity-chromatography using epitope-specific immunogen.
Clonality	Polyclonal
Concentration	1 mg/ml
Observed band	38kD
Human Gene ID	922
Human Swiss-Prot Number	O43866
Alternative Names	
Background	function:May play a role in the regulation of the immune system. Seems to play a role as an inhibitor of apoptosis.,similarity:Contains 3 SRCR domains.,subunit:Associated with IgM.,tissue specificity:Expressed in spleen, lymph node, thymus,

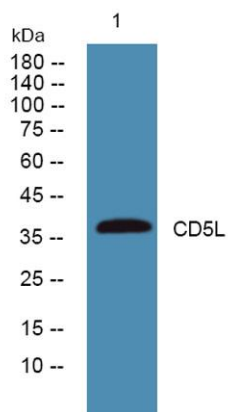




ELK Biotechnology

bone marrow, and fetal liver, but not in non-lymphoid tissues.,

Western blot analysis of lysates from SW480 cells, primary antibody was diluted at 1:1000, 4° over night



+86-27-59760950

ELKbio@ELKbiotech.com

www.elkbiotech.com

23-2, No.388 Gaoxin 2nd Road, Wuhan East Lake Hi-tech Development Zone, Hubei, P.R.C.