

SL9A2 rabbit pAb

Cat No.:ES10285

For research use only

Overview

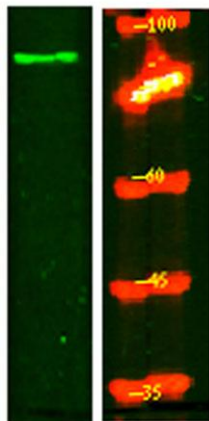
Product Name	SL9A2 rabbit pAb
Host species	Rabbit
Applications	WB;ELISA
Species Cross-Reactivity	Human;Rat
Recommended dilutions	WB 1:500-2000 ELISA 1:5000-20000
Immunogen	Synthesized peptide derived from part region of human protein
Specificity	SL9A2 Polyclonal Antibody detects endogenous levels of protein.
Formulation	Liquid in PBS containing 50% glycerol, 0.5% BSA and 0.02% sodium azide.
Storage	Store at -20°C. Avoid repeated freeze-thaw cycles.
Protein Name	Sodium/hydrogen exchanger 2 (Na ⁺)/H ⁺ exchanger 2) (NHE-2) (Solute carrier family 9 member 2)
Gene Name	SLC9A2 NHE2
Cellular localization	Membrane; Multi-pass membrane protein.
Purification	The antibody was affinity-purified from rabbit antiserum by affinity-chromatography using epitope-specific immunogen.
Clonality	Polyclonal
Concentration	1 mg/ml
Observed band	89kD
Human Gene ID	6549
Human Swiss-Prot Number	Q9UBYO
Alternative Names	
Background	This gene encodes a member of the sodium-hydrogen exchanger (NHE) protein family. These proteins are involved in sodium-ion transport by exchanging intracellular hydrogen ions to external sodium ions and help in the regulation of cell pH and volume. The encoded protein is localized to the apical membrane and is involved in apical





ELK Biotechnology

absorption of sodium. [provided by RefSeq, Jun 2016],



Western Blot analysis of HeLa lysis, using primary antibody at 1:1000 dilution. Secondary antibody(catalog#:RS23920) was diluted at 1:10000



+86-27-59760950

ELKbio@ELKbiotech.com

www.elkbiotech.com

23-2, No.388 Gaoxin 2nd Road,Wuhan East Lake Hi-tech Development Zone, Hubei , P.R.C