

# SH3G3 rabbit pAb

Cat No.:ES10255

For research use only

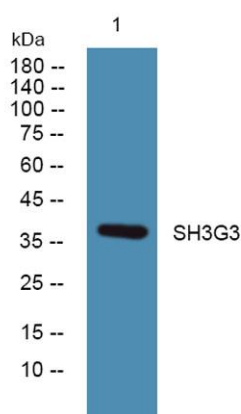
## Overview

Product Name	SH3G3 rabbit pAb
Host species	Rabbit
Applications	WB;ELISA
Species Cross-Reactivity	Human;Rat;Mouse
Recommended dilutions	WB 1:500-2000 ELISA 1:5000-20000
Immunogen	Synthesized peptide derived from part region of human protein
Specificity	SH3G3 Polyclonal Antibody detects endogenous levels of protein.
Formulation	Liquid in PBS containing 50% glycerol, 0.5% BSA and 0.02% sodium azide.
Storage	Store at -20°C. Avoid repeated freeze-thaw cycles.
Protein Name	Endophilin-A3 (EEN-B2) (Endophilin-3) (SH3 domain protein 2C) (SH3 domain-containing GRB2-like protein 3)
Gene Name	SH3GL3 CNSA3 SH3D2C
Cellular localization	Cytoplasm . Early endosome membrane ; Peripheral membrane protein . Associated with postsynaptic endosomes in hippocampal neurons. Associated with presynaptic endosomes in olfactory neurons. .
Purification	The antibody was affinity-purified from rabbit antiserum by affinity-chromatography using epitope-specific immunogen.
Clonality	Polyclonal
Concentration	1 mg/ml
Observed band	38kD
Human Gene ID	6457
Human Swiss-Prot Number	Q99963
Alternative Names	
Background	domain:An N-terminal amphipathic helix, the BAR domain and a second amphipathic helix inserted into helix 1 of the BAR domain (N-BAR domain) induce membrane curvature and bind curved





membranes.,function:Implicated in endocytosis.  
May recruit other proteins to membranes with high curvature.,similarity:Belongs to the endophilin family.,similarity:Contains 1 BAR domain.,similarity:Contains 1 SH3 domain.,subcellular location:Associated with postsynaptic endosomes in hippocampal neurons. Associated with presynaptic endosomes in olfactory neurons.,subunit:Interacts with ARC (By similarity). Interacts with DNM1, SGIP1 and SYNJ1. Interacts with the huntingtin exon 1 protein (HDEX1P) containing a glutamine repeat in the pathological range and promotes formation of insoluble polyglutamine-containing aggregates in vivo.,tissue specificity:Brain and testis.,



Western blot analysis of lysates from K562 cells, primary antibody was diluted at 1:1000, 4°over night

