

SPB6 rabbit pAb

Cat No.:ES10235

For research use only

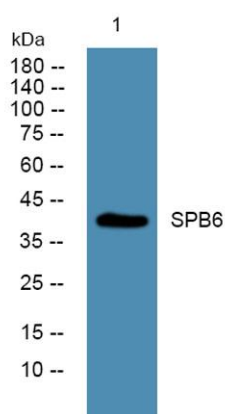
Overview

| | |
|--------------------------|---|
| Product Name | SPB6 rabbit pAb |
| Host species | Rabbit |
| Applications | WB;ELISA |
| Species Cross-Reactivity | Human;Mouse |
| Recommended dilutions | WB 1:500-2000 ELISA 1:5000-20000 |
| Immunogen | Synthesized peptide derived from part region of human protein |
| Specificity | SPB6 Polyclonal Antibody detects endogenous levels of protein. |
| Formulation | Liquid in PBS containing 50% glycerol, 0.5% BSA and 0.02% sodium azide. |
| Storage | Store at -20°C. Avoid repeated freeze-thaw cycles. |
| Protein Name | Serpin B6 (Cytoplasmic antiproteinase) (CAP) (Peptidase inhibitor 6) (PI-6) (Placental thrombin inhibitor) |
| Gene Name | SERPINB6 PI6 PTI |
| Cellular localization | Cytoplasm . |
| Purification | The antibody was affinity-purified from rabbit antiserum by affinity-chromatography using epitope-specific immunogen. |
| Clonality | Polyclonal |
| Concentration | 1 mg/ml |
| Observed band | 41kD |
| Human Gene ID | 5269 |
| Human Swiss-Prot Number | P35237 |
| Alternative Names | |
| Background | The protein encoded by this gene is a member of the serpin (serine proteinase inhibitor) superfamily, and ovalbumin(ov)-serpin subfamily. It was originally discovered as a placental thrombin inhibitor. The mouse homolog was found to be expressed in the hair cells of the inner ear. Mutations in this gene are associated with nonsyndromic progressive hearing |





loss, suggesting that this serpin plays an important role in the inner ear in the protection against leakage of lysosomal content during stress, and that loss of this protection results in cell death and sensorineural hearing loss. Alternatively spliced transcript variants have been found for this gene. [provided by RefSeq, Sep 2010],



Western blot analysis of lysates from PC12 cells, primary antibody was diluted at 1:1000, 4°over night

