

# MST4 rabbit pAb

Cat No.:ES10206

For research use only

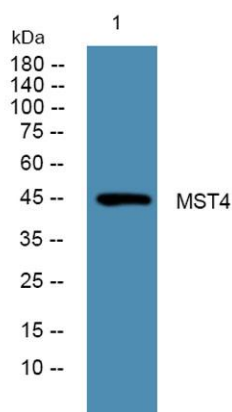
## Overview

Product Name	MST4 rabbit pAb
Host species	Rabbit
Applications	WB;ELISA
Species Cross-Reactivity	Human;Mouse
Recommended dilutions	WB 1:500-2000 ELISA 1:5000-20000
Immunogen	Synthesized peptide derived from human protein . at AA range: 320-400
Specificity	MST4 Polyclonal Antibody detects endogenous levels of protein.
Formulation	Liquid in PBS containing 50% glycerol, 0.5% BSA and 0.02% sodium azide.
Storage	Store at -20°C. Avoid repeated freeze-thaw cycles.
Protein Name	Serine/threonine-protein kinase MST4 (EC 2.7.11.1) (Mammalian STE20-like protein kinase 4) (MST-4) (Mst3 and SOK1-related kinase) (STE20-like kinase MST4) (Serine/threonine-protein kinase MASK)
Gene Name	MST4 MASK
Cellular localization	Cytoplasm . Golgi apparatus . Colocalized with RIPOR1 in the Golgi of serum-starved cells and relocated to cytoplasmic punctae, probably vesicular compartments, along with RIPOR1 upon serum stimulation in a Rho- and PDCD10-dependent manner (PubMed:2780700
Purification	The antibody was affinity-purified from rabbit antiserum by affinity-chromatography using epitope-specific immunogen.
Clonality	Polyclonal
Concentration	1 mg/ml
Observed band	45kD
Human Gene ID	51765
Human Swiss-Prot Number	Q9P289
Alternative Names	
Background	The product of this gene is a member of the GCK





group III family of kinases, which are a subset of the Ste20-like kinases. The encoded protein contains an amino-terminal kinase domain, and a carboxy-terminal regulatory domain that mediates homodimerization. The protein kinase localizes to the Golgi apparatus and is specifically activated by binding to the Golgi matrix protein GM130. It is also cleaved by caspase-3 in vitro, and may function in the apoptotic pathway. Several alternatively spliced transcript variants of this gene have been described, but the full-length nature of some of these variants has not been determined. [provided by RefSeq, Jul 2008],



Western blot analysis of lysates from HCT116 cells,  
primary antibody was diluted at 1:1000, 4°over night

