

RHXF1 rabbit pAb

Cat No.:ES10178

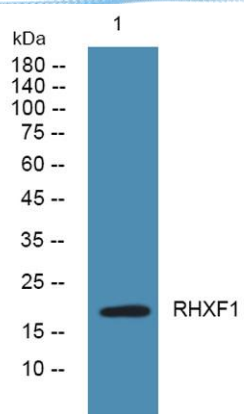
For research use only

Overview

| | |
|--------------------------|---|
| Product Name | RHXF1 rabbit pAb |
| Host species | Rabbit |
| Applications | WB;ELISA |
| Species Cross-Reactivity | Human;Rat;Mouse; |
| Recommended dilutions | WB 1:500-2000 ELISA 1:5000-20000 |
| Immunogen | Synthesized peptide derived from human protein . at AA range: 110-190 |
| Specificity | RHXF1 Polyclonal Antibody detects endogenous levels of protein. |
| Formulation | Liquid in PBS containing 50% glycerol, 0.5% BSA and 0.02% sodium azide. |
| Storage | Store at -20°C. Avoid repeated freeze-thaw cycles. |
| Protein Name | Rhox homeobox family member 1 (Ovary-, testis- and epididymis-expressed gene protein) (Paired-like homeobox protein PEPP-1) |
| Gene Name | RHOXF1 OTEX PEPP1 |
| Cellular localization | Nucleus . |
| Purification | The antibody was affinity-purified from rabbit antiserum by affinity-chromatography using epitope-specific immunogen. |
| Clonality | Polyclonal |
| Concentration | 1 mg/ml |
| Observed band | 20kD |
| Human Gene ID | 158800 |
| Human Swiss-Prot Number | Q8NHV9 |
| Alternative Names | |
| Background | This gene is a member of the PEPP subfamily of paired-like homoeobox genes. The gene may be regulated by androgens and epigenetic mechanisms. The encoded nuclear protein is likely a transcription factor that may play a role in human reproduction. [provided by RefSeq, Dec 2012], |



ELK Biotechnology



Western blot analysis of lysates from Jarkat cells, primary antibody was diluted at 1:1000, 4° over night