

# RGS20 rabbit pAb

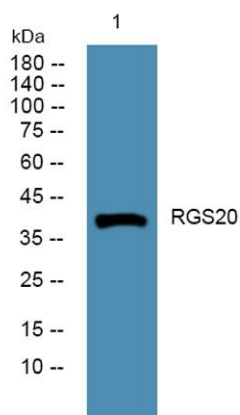
Cat No.:ES10148

For research use only

## Overview

Product Name	RGS20 rabbit pAb
Host species	Rabbit
Applications	WB;ELISA
Species Cross-Reactivity	Human;Mouse
Recommended dilutions	WB 1:500-2000 ELISA 1:5000-20000
Immunogen	Synthesized peptide derived from human protein . at AA range: 180-260
Specificity	RGS20 Polyclonal Antibody detects endogenous levels of protein.
Formulation	Liquid in PBS containing 50% glycerol, 0.5% BSA and 0.02% sodium azide.
Storage	Store at -20°C. Avoid repeated freeze-thaw cycles.
Protein Name	Regulator of G-protein signaling 20 (RGS20) (Gz-selective GTPase-activating protein) (G(z)GAP) (Gz-GAP) (Regulator of G-protein signaling Z1) (Regulator of Gz-selective protein signaling 1)
Gene Name	RGS20 RGSZ1 ZGAP1
Cellular localization	Membrane; Lipid-anchor. Nucleus. Cytoplasm. Shuttles between the cytoplasm/cell membrane and the nucleus. Anchored to the membrane through palmitoylation. .
Purification	The antibody was affinity-purified from rabbit antiserum by affinity-chromatography using epitope-specific immunogen.
Clonality	Polyclonal
Concentration	1 mg/ml
Observed band	42kD
Human Gene ID	8601
Human Swiss-Prot Number	O76081
Alternative Names	
Background	The protein encoded by this gene belongs to the family of regulator of G protein signaling (RGS) proteins, which are regulatory and structural

components of G protein-coupled receptor complexes. RGS proteins inhibit signal transduction by increasing the GTPase activity of G protein alpha subunits, thereby driving them into their inactive GDP-bound forms. This protein selectively binds to G(z)-alpha and G(alpha)-i2 subunits, and regulates their signaling activities. Alternatively spliced transcript variants encoding different isoforms have been found for this gene. [provided by RefSeq, Sep 2011],



Western blot analysis of lysates from HCT116 cells,  
primary antibody was diluted at 1:1000, 4°over night