

RAB43 rabbit pAb

Cat No.:ES10130

For research use only

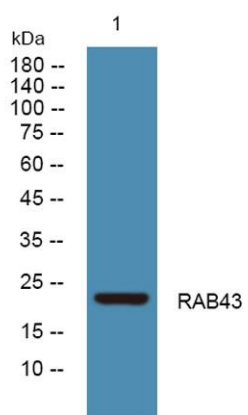
Overview

Product Name	RAB43 rabbit pAb
Host species	Rabbit
Applications	WB;ELISA
Species Cross-Reactivity	Human;Rat;Mouse;
Recommended dilutions	WB 1:500-2000 ELISA 1:5000-20000
Immunogen	Synthesized peptide derived from human protein . at AA range: 90-170
Specificity	RAB43 Polyclonal Antibody detects endogenous levels of protein.
Formulation	Liquid in PBS containing 50% glycerol, 0.5% BSA and 0.02% sodium azide.
Storage	Store at -20°C. Avoid repeated freeze-thaw cycles.
Protein Name	Ras-related protein Rab-43 (Ras-related protein Rab-41)
Gene Name	RAB43 RAB41
Cellular localization	Cytoplasmic vesicle, phagosome . Cytoplasmic vesicle, phagosome membrane ; Lipid-anchor ; Cytoplasmic side . Golgi apparatus . Golgi apparatus, trans-Golgi network membrane ; Lipid-anchor . Golgi apparatus, trans-Golgi network . Recruited to phagosomes co
Purification	The antibody was affinity-purified from rabbit antiserum by affinity-chromatography using epitope-specific immunogen.
Clonality	Polyclonal
Concentration	1 mg/ml
Observed band	23kD
Human Gene ID	339122
Human Swiss-Prot Number	Q86YS6
Alternative Names	
Background	similarity:Belongs to the small GTPase superfamily. Rab family.,tissue specificity:Widely expressed in brain, testis, lung, heart, ovary, colon, kidney, uterus



ELK Biotechnology

and spleen but not in liver.,



Western blot analysis of lysates from K562 cells, primary antibody was diluted at 1:1000, 4° over night