

RAB15 rabbit pAb

Cat No.:ES10112

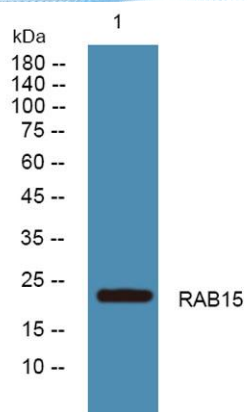
For research use only

Overview

Product Name	RAB15 rabbit pAb
Host species	Rabbit
Applications	WB;ELISA
Species Cross-Reactivity	Human;Mouse;Rat
Recommended dilutions	WB 1:500-2000 ELISA 1:5000-20000
Immunogen	Synthesized peptide derived from human protein . at AA range: 80-160
Specificity	RAB15 Polyclonal Antibody detects endogenous levels of protein.
Formulation	Liquid in PBS containing 50% glycerol, 0.5% BSA and 0.02% sodium azide.
Storage	Store at -20°C. Avoid repeated freeze-thaw cycles.
Protein Name	Ras-related protein Rab-15
Gene Name	RAB15
Cellular localization	Cell membrane ; Lipid-anchor ; Cytoplasmic side .
Purification	The antibody was affinity-purified from rabbit antiserum by affinity-chromatography using epitope-specific immunogen.
Clonality	Polyclonal
Concentration	1 mg/ml
Observed band	23kD
Human Gene ID	376267
Human Swiss-Prot Number	P59190
Alternative Names	
Background	function:May act in concert with RAB3A in regulating aspects of synaptic vesicle membrane flow within the nerve terminal.,similarity:Belongs to the small GTPase superfamily. Rab family.,subunit:The GTP bound form of RAB15 interacts with REP15.,



ELK Biotechnology



Western blot analysis of lysates from A431 cells, primary antibody was diluted at 1:1000, 4° over night