

# RBL2B rabbit pAb

Cat No.:ES10082

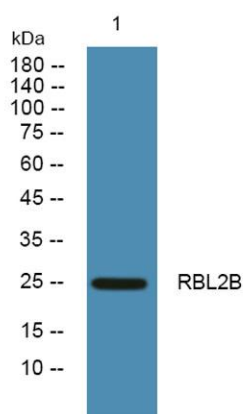
For research use only

## Overview

Product Name	RBL2B rabbit pAb
Host species	Rabbit
Applications	WB;ELISA
Species Cross-Reactivity	Human;Rat;Mouse;
Recommended dilutions	WB 1:500-2000 ELISA 1:5000-20000
Immunogen	Synthesized peptide derived from human protein . at AA range: 50-130
Specificity	RBL2B Polyclonal Antibody detects endogenous levels of protein.
Formulation	Liquid in PBS containing 50% glycerol, 0.5% BSA and 0.02% sodium azide.
Storage	Store at -20°C. Avoid repeated freeze-thaw cycles.
Protein Name	Rab-like protein 2B
Gene Name	RABL2B
Cellular localization	Cytoplasm, cytoskeleton, microtubule organizing center, centrosome, centriole . Cytoplasm, cytoskeleton, cilium basal body . Cytoplasm . Localizes on the mother centriole. Localizes slightly apical to the subdistal appendage, but below the distal appendag
Purification	The antibody was affinity-purified from rabbit antiserum by affinity-chromatography using epitope-specific immunogen.
Clonality	Polyclonal
Concentration	1 mg/ml
Observed band	25kD
Human Gene ID	11158
Human Swiss-Prot Number	Q9UNT1
Alternative Names	
Background	The RABL2B protein is a member of the RAB gene family which belongs to the RAS GTPase superfamily. RABL2B is located within a subtelomeric region of 22q13.3. Multiple alternatively spliced transcript



variants encoding several different isoforms have been found for this gene. [provided by RefSeq, Aug 2008],



Western blot analysis of lysates from A431 cells, primary antibody was diluted at 1:1000, 4° over night