

SYF2 rabbit pAb

Cat No.:ES10047

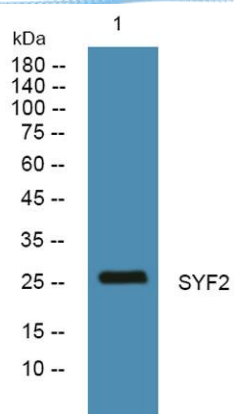
For research use only

Overview

Product Name	SYF2 rabbit pAb
Host species	Rabbit
Applications	WB;ELISA
Species Cross-Reactivity	Human;Mouse;Rat
Recommended dilutions	WB 1:500-2000 ELISA 1:5000-20000
Immunogen	Synthesized peptide derived from human protein . at AA range: 160-240
Specificity	SYF2 Polyclonal Antibody detects endogenous levels of protein.
Formulation	Liquid in PBS containing 50% glycerol, 0.5% BSA and 0.02% sodium azide.
Storage	Store at -20°C. Avoid repeated freeze-thaw cycles.
Protein Name	Pre-mRNA-splicing factor SYF2 (CCNDBP1-interactor) (p29)
Gene Name	SYF2 CBPIN GCIP
Cellular localization	Nucleus .
Purification	The antibody was affinity-purified from rabbit antiserum by affinity-chromatography using epitope-specific immunogen.
Clonality	Polyclonal
Concentration	1 mg/ml
Observed band	26kD
Human Gene ID	25949
Human Swiss-Prot Number	O95926
Alternative Names	
Background	This gene encodes a nuclear protein that interacts with cyclin D-type binding-protein 1, which is thought to be a cell cycle regulator at the G1/S transition. Alternate transcriptional splice variants, encoding different isoforms, have been characterized. [provided by RefSeq, Jul 2008],



ELK Biotechnology



Western blot analysis of lysates from PC12 cells, primary antibody was diluted at 1:1000, 4° over night