

PHX2B rabbit pAb

Cat No.:ES9971

For research use only

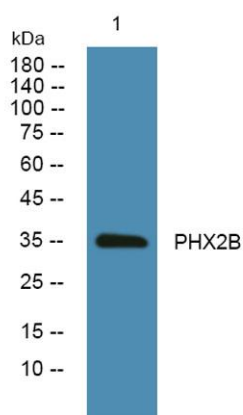
Overview

Product Name	PHX2B rabbit pAb
Host species	Rabbit
Applications	WB;ELISA
Species Cross-Reactivity	Human;Mouse
Recommended dilutions	WB 1:500-2000 ELISA 1:5000-20000
Immunogen	Synthesized peptide derived from human protein . at AA range: 140-220
Specificity	PHX2B Polyclonal Antibody detects endogenous levels of protein.
Formulation	Liquid in PBS containing 50% glycerol, 0.5% BSA and 0.02% sodium azide.
Storage	Store at -20°C. Avoid repeated freeze-thaw cycles.
Protein Name	Paired mesoderm homeobox protein 2B (Neuroblastoma Phox) (NBPhox) (PHOX2B homeodomain protein) (Paired-like homeobox 2B)
Gene Name	PHOX2B PMX2B
Cellular localization	Nucleus .
Purification	The antibody was affinity-purified from rabbit antiserum by affinity-chromatography using epitope-specific immunogen.
Clonality	Polyclonal
Concentration	1 mg/ml
Observed band	34kD
Human Gene ID	8929
Human Swiss-Prot Number	Q99453
Alternative Names	
Background	paired like homeobox 2b(PHOX2B) Homo sapiens The DNA-associated protein encoded by this gene is a member of the paired family of homeobox proteins localized to the nucleus. The protein functions as a transcription factor involved in the development of several major noradrenergic neuron populations and the determination of





neurotransmitter phenotype. The gene product is linked to enhancement of second messenger-mediated activation of the dopamine beta-hydroxylase, c-fos promoters and several enhancers, including cyclic amp-response element and serum-response element. Expansion of a 20 amino acid polyalanine tract in this protein by 5-13 aa has been associated with congenital central hypoventilation syndrome. [provided by RefSeq, Jul 2016],



Western blot analysis of lysates from KB cells, primary antibody was diluted at 1:1000, 4°over night

