

# STP2 rabbit pAb

Cat No.:ES9948

For research use only

## Overview

Product Name	STP2 rabbit pAb
Host species	Rabbit
Applications	WB;ELISA
Species Cross-Reactivity	Human;Rat;Mouse;
Recommended dilutions	WB 1:500-2000 ELISA 1:5000-20000
Immunogen	Synthesized peptide derived from human protein . at AA range: 70-150
Specificity	STP2 Polyclonal Antibody detects endogenous levels of protein.
Formulation	Liquid in PBS containing 50% glycerol, 0.5% BSA and 0.02% sodium azide.
Storage	Store at -20°C. Avoid repeated freeze-thaw cycles.
Protein Name	Nuclear transition protein 2 (TP-2) (TP2)
Gene Name	TNP2
Cellular localization	Nucleus . Chromosome . Loaded onto the nucleosomes of condensing spermatids (By similarity). Nuclear import is ATP-dependent and nucleolar localization requires the protein to be phosphorylated (By similarity). .
Purification	The antibody was affinity-purified from rabbit antiserum by affinity-chromatography using epitope-specific immunogen.
Clonality	Polyclonal
Concentration	1 mg/ml
Observed band	15kD
Human Gene ID	7142
Human Swiss-Prot Number	Q05952
Alternative Names	
Background	function:In the elongating spermatids of mammals, the conversion of nucleosomal chromatin to the compact, non-nucleosomal form found in the sperm nucleus is associated with the appearance of a small set of basic chromosomal transition

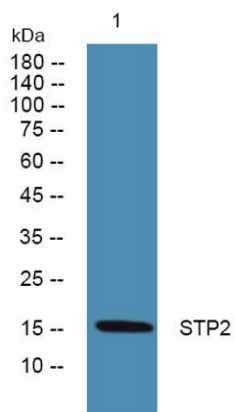




**ELK Biotechnology**

proteins.,similarity:Belongs to the nuclear transition protein 2 family.,tissue specificity:Testis.,

Western blot analysis of lysates from A431 cells, primary antibody was diluted at 1:1000, 4°over night



+86-27-59760950

ELKbio@ELKbiotech.com

[www.elkbiotech.com](http://www.elkbiotech.com)

23-2, No.388 Gaoxin 2nd Road,Wuhan East Lake Hi-tech Development Zone, Hubei , P.R.C