

NPIP rabbit pAb

Cat No.:ES9941

For research use only

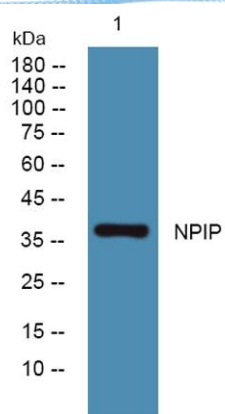
Overview

Product Name	NPIP rabbit pAb
Host species	Rabbit
Applications	WB;ELISA
Species Cross-Reactivity	Human;Rat;Mouse;
Recommended dilutions	WB 1:500-2000 ELISA 1:5000-20000
Immunogen	Synthesized peptide derived from human protein . at AA range: 110-190
Specificity	NPIP Polyclonal Antibody detects endogenous levels of protein.
Formulation	Liquid in PBS containing 50% glycerol, 0.5% BSA and 0.02% sodium azide.
Storage	Store at -20°C. Avoid repeated freeze-thaw cycles.
Protein Name	Nuclear pore complex-interacting protein (NPIP)
Gene Name	NPIP
Cellular localization	Nucleus, nuclear pore complex . Nucleus membrane . Colocalizes with nuclear pore complex protein NUP62.
Purification	The antibody was affinity-purified from rabbit antiserum by affinity-chromatography using epitope-specific immunogen.
Clonality	Polyclonal
Concentration	1 mg/ml
Observed band	38kD
Human Gene ID	642799
Human Swiss-Prot Number	Q9UND3
Alternative Names	
Background	similarity:Belongs to the NPIP family.,similarity:Contains 1 GPS domain.,subcellular location:Colocalizes with nuclear pore complex protein NUP62.,subunit:May associate with the nuclear pore complex.,tissue specificity:Widely expressed.,





ELK Biotechnology



Western blot analysis of lysates from Jarkat cells, primary antibody was diluted at 1:1000, 4° over night



+86-27-59760950

ELKbio@ELKbiotech.com

www.elkbiotech.com

23-2, No.388 Gaoxin 2nd Road, Wuhan East Lake Hi-tech Development Zone, Hubei, P.R.C.