



NMB rabbit pAb

Cat No.:ES9914

For research use only

Overview

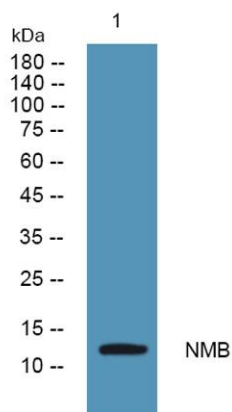
Product Name	NMB rabbit pAb
Host species	Rabbit
Applications	WB;ELISA
Species Cross-Reactivity	Human;Mouse
Recommended dilutions	WB 1:500-2000 ELISA 1:5000-20000
Immunogen	Synthesized peptide derived from human protein . at AA range: 20-100
Specificity	NMB Polyclonal Antibody detects endogenous levels of protein.
Formulation	Liquid in PBS containing 50% glycerol, 0.5% BSA and 0.02% sodium azide.
Storage	Store at -20°C. Avoid repeated freeze-thaw cycles.
Protein Name	Neuromedin-B [Cleaved into: Neuromedin-B-32; Neuromedin-B]
Gene Name	NMB
Cellular localization	Secreted . Cell projection, neuron projection . In neurons of the retrotrapezoid nucleus//parafacial respiratory group, expressed on neuron projections which project into the pre-Botzinger complex. .
Purification	The antibody was affinity-purified from rabbit antiserum by affinity-chromatography using epitope-specific immunogen.
Clonality	Polyclonal
Concentration	1 mg/ml
Observed band	13kD
Human Gene ID	4828
Human Swiss-Prot Number	P08949
Alternative Names	
Background	This gene encodes a member of the bombesin-like family of neuropeptides, which negatively regulate eating behavior. The encoded protein may regulate colonic smooth muscle contraction through binding to its cognate receptor, the neuromedin B receptor





ELK Biotechnology

(NMBR). Polymorphisms of this gene may be associated with hunger, weight gain and obesity. Alternative splicing results in multiple transcript variants. [provided by RefSeq, Jul 2015],



Western blot analysis of lysates from U2OS cells, primary antibody was diluted at 1:1000, 4° over night



+86-27-59760950

ELKbio@ELKbiotech.com

www.elkbiotech.com

23-2, No.388 Gaoxin 2nd Road, Wuhan East Lake Hi-tech Development Zone, Hubei, P.R.C.