

SAR1A rabbit pAb

Cat No.:ES9695

For research use only

Overview

Product Name	SAR1A rabbit pAb
Host species	Rabbit
Applications	WB;ELISA
Species Cross-Reactivity	Human;Mouse
Recommended dilutions	WB 1:500-2000 ELISA 1:5000-20000
Immunogen	Synthesized peptide derived from part region of human protein
Specificity	SAR1A Polyclonal Antibody detects endogenous levels of protein.
Formulation	Liquid in PBS containing 50% glycerol, 0.5% BSA and 0.02% sodium azide.
Storage	Store at -20°C. Avoid repeated freeze-thaw cycles.
Protein Name	GTP-binding protein SAR1a (COPII-associated small GTPase)
Gene Name	SAR1A SAR1 SARA SARA1
Cellular localization	Endoplasmic reticulum . Golgi apparatus .
Purification	The antibody was affinity-purified from rabbit antiserum by affinity-chromatography using epitope-specific immunogen.
Clonality	Polyclonal
Concentration	1 mg/ml
Observed band	21kD
Human Gene ID	56681
Human Swiss-Prot Number	Q9NR31
Alternative Names	
Background	function:Involved in transport from the endoplasmic reticulum to the Golgi apparatus (By similarity). Required to maintain SEC16A localization at discrete locations on the ER membrane perhaps by preventing its dissociation. SAR1A-GTP-dependent assembly of SEC16A on the ER membrane forms an organized scaffold defining endoplasmic reticulum exit sites (ERES).,similarity:Belongs to the small

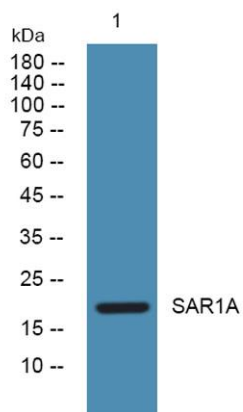




ELK Biotechnology

GTPase superfamily.,similarity:Belongs to the small GTPase superfamily. SAR1 family.,

Western blot analysis of lysates from K562 cells, primary antibody was diluted at 1:1000, 4°over night



+86-27-59760950

ELKbio@ELKbiotech.com

www.elkbiotech.com

23-2, No.388 Gaoxin 2nd Road,Wuhan East Lake Hi-tech Development Zone, Hubei , P.R.C