

RIT2 rabbit pAb

Cat No.:ES9694

For research use only

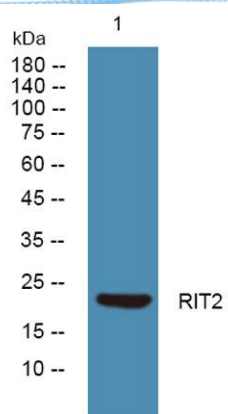
Overview

| | |
|--------------------------|--|
| Product Name | RIT2 rabbit pAb |
| Host species | Rabbit |
| Applications | WB;ELISA |
| Species Cross-Reactivity | Human;Rat;Mouse |
| Recommended dilutions | WB 1:500-2000 ELISA 1:5000-20000 |
| Immunogen | Synthesized peptide derived from part region of human protein |
| Specificity | RIT2 Polyclonal Antibody detects endogenous levels of protein. |
| Formulation | Liquid in PBS containing 50% glycerol, 0.5% BSA and 0.02% sodium azide. |
| Storage | Store at -20°C. Avoid repeated freeze-thaw cycles. |
| Protein Name | GTP-binding protein Rit2 (Ras-like protein expressed in neurons) (Ras-like without CAAX protein 2) |
| Gene Name | RIT2 RIN ROC2 |
| Cellular localization | Nucleus . Cell membrane . Colocalizes with PLXNB3 at the plasma membrane (PubMed:16122393). . |
| Purification | The antibody was affinity-purified from rabbit antiserum by affinity-chromatography using epitope-specific immunogen. |
| Clonality | Polyclonal |
| Concentration | 1 mg/ml |
| Observed band | 23kD |
| Human Gene ID | 6014 |
| Human Swiss-Prot Number | Q99578 |
| Alternative Names | |
| Background | RIN belongs to the RAS (HRAS; MIM 190020) superfamily of small GTPases (Shao et al., 1999 [PubMed 10545207]).[supplied by OMIM, Mar 2008], |





ELK Biotechnology



Western blot analysis of lysates from K562 cells, primary antibody was diluted at 1:1000, 4° over night



+86-27-59760950

ELKbio@ELKbiotech.com

www.elkbiotech.com

23-2, No.388 Gaoxin 2nd Road, Wuhan East Lake Hi-tech Development Zone, Hubei, P.R.C.