

DHB1 rabbit pAb

Cat No.:ES9651

For research use only

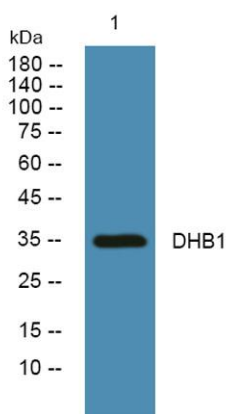
Overview

Product Name	DHB1 rabbit pAb
Host species	Rabbit
Applications	WB;ELISA
Species Cross-Reactivity	Human;Rat;Mouse;
Recommended dilutions	WB 1:500-2000 ELISA 1:5000-20000
Immunogen	Synthesized peptide derived from part region of human protein
Specificity	DHB1 Polyclonal Antibody detects endogenous levels of protein.
Formulation	Liquid in PBS containing 50% glycerol, 0.5% BSA and 0.02% sodium azide.
Storage	Store at -20°C. Avoid repeated freeze-thaw cycles.
Protein Name	Estradiol 17-beta-dehydrogenase 1 (EC 1.1.1.62) (17-beta-hydroxysteroid dehydrogenase type 1) (17-beta-HSD 1) (20 alpha-hydroxysteroid dehydrogenase) (20-alpha-HSD) (E2DH) (Placental 17-beta-hydroxyst
Gene Name	HSD17B1 E17KSR EDH17B1 EDH17B2 EDHB17
Cellular localization	Cytoplasm.
Purification	The antibody was affinity-purified from rabbit antiserum by affinity-chromatography using epitope-specific immunogen.
Clonality	Polyclonal
Concentration	1 mg/ml
Observed band	36kD
Human Gene ID	3292
Human Swiss-Prot Number	P14061
Alternative Names	
Background	hydroxysteroid 17-beta dehydrogenase 1(HSD17B1) Homo sapiens This gene encodes a member of the 17beta-hydroxysteroid dehydrogenase family of short-chain dehydrogenases/reductases. It has a dual function in estrogen activation and androgen





inactivation and plays a major role in establishing the estrogen E2 concentration gradient between serum and peripheral tissues. The encoded protein catalyzes the last step in estrogen activation, using NADPH to convert estrogens E1 and E2 and androgens like 4-androstenedione, to testosterone. It has an N-terminal short-chain dehydrogenase domain with a cofactor binding site, and a narrow, hydrophobic C-terminal domain with a steroid substrate binding site. This gene is expressed primarily in the placenta and ovarian granulosa cells, and to a lesser extent, in the endometrium, adipose tissue, and prostate. Polymorphisms in this gene have been linked to breast and prostate cancer. A pseudogene of this gene has



Western blot analysis of lysates from KB cells, primary antibody was diluted at 1:1000, 4°over night

