

TRI63 rabbit pAb

Cat No.:ES9637

For research use only

Overview

Product Name	TRI63 rabbit pAb
Host species	Rabbit
Applications	WB;ELISA
Species Cross-Reactivity	Human;Mouse;Rat
Recommended dilutions	WB 1:500-2000 ELISA 1:5000-20000
Immunogen	Synthesized peptide derived from part region of human protein
Specificity	TRI63 Polyclonal Antibody detects endogenous levels of protein.
Formulation	Liquid in PBS containing 50% glycerol, 0.5% BSA and 0.02% sodium azide.
Storage	Store at -20°C. Avoid repeated freeze-thaw cycles.
Protein Name	E3 ubiquitin-protein ligase TRIM63 (EC 6.3.2.-) (Iris RING finger protein) (Muscle-specific RING finger protein 1) (MuRF-1) (MuRF1) (RING finger protein 28) (Striated muscle RING zinc finger protein)
Gene Name	TRIM63 IRF MURF1 RNF28 SMRZ
Cellular localization	Cytoplasm. Nucleus . Cytoplasm, myofibril, sarcomere, M line. Cytoplasm, myofibril, sarcomere, Z line. Colocalizes with TNNI3 in myocytes (By similarity). Localizes to the M- and Z-lines in skeletal muscle. .
Purification	The antibody was affinity-purified from rabbit antiserum by affinity-chromatography using epitope-specific immunogen.
Clonality	Polyclonal
Concentration	1 mg/ml
Observed band	38kD
Human Gene ID	84676
Human Swiss-Prot Number	Q969Q1
Alternative Names	
Background	This gene encodes a member of the RING zinc finger protein family found in striated muscle and iris. The

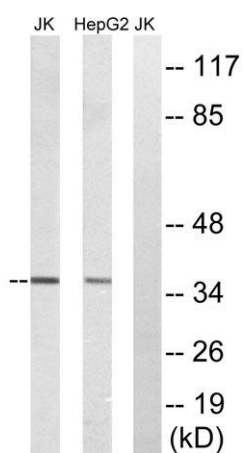




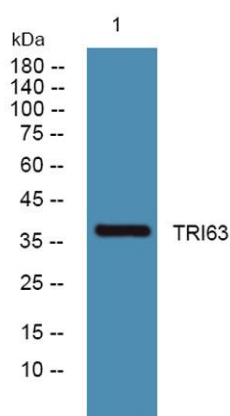
product of this gene is an E3 ubiquitin ligase that localizes to the Z-line and M-line lattices of myofibrils. This protein plays an important role in the atrophy of skeletal and cardiac muscle and is required for the degradation of myosin heavy chain proteins, myosin light chain, myosin binding protein, and for muscle-type creatine kinase. [provided by RefSeq, Feb 2012],



Western Blot analysis of various cells using TRIM63 Polyclonal Antibody diluted at 1:2000. Secondary antibody(catalog#:RS0002) was diluted at 1:20000



Western blot analysis of lysates from HepG2 and Jurkat cells, using UBR1 Antibody. The lane on the right is blocked with the synthesized peptide.



Western blot analysis of lysates from SH-SY5Y cells, primary antibody was diluted at 1:1000, 4° over night

