

DYLT3 rabbit pAb

Cat No.:ES9619

For research use only

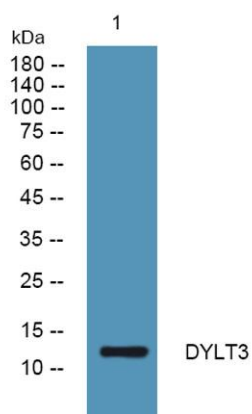
Overview

Product Name	DYLT3 rabbit pAb
Host species	Rabbit
Applications	WB;ELISA
Species Cross-Reactivity	Human;Rat;Mouse;
Recommended dilutions	WB 1:500-2000 ELISA 1:5000-20000
Immunogen	Synthesized peptide derived from part region of human protein AA range: 1-50
Specificity	DYLT3 Polyclonal Antibody detects endogenous levels of protein.
Formulation	Liquid in PBS containing 50% glycerol, 0.5% BSA and 0.02% sodium azide.
Storage	Store at -20°C. Avoid repeated freeze-thaw cycles.
Protein Name	Dynein light chain Tctex-type 3 (Protein 91/23) (T-complex-associated testis-expressed 1-like)
Gene Name	DYNLT3 TCTE1L TCTE1XL
Cellular localization	Nucleus. Cytoplasm, cytoskeleton. Chromosome, centromere, kinetochore. Colocalizes with BUB3 at kinetochores specifically during prometaphase.
Purification	The antibody was affinity-purified from rabbit antiserum by affinity-chromatography using epitope-specific immunogen.
Clonality	Polyclonal
Concentration	1 mg/ml
Observed band	12kD
Human Gene ID	6990
Human Swiss-Prot Number	P51808
Alternative Names	
Background	dynein light chain Tctex-type 3(DYNLT3) Homo sapiens This gene encodes a member of a subclass of dynein light chains. The encoded protein homodimerizes and forms the light chain component of the cytoplasmic dynein motor protein complex. This protein may be important for binding





dynein to specific cargos including the spindle checkpoint protein BUB3. This protein may also function independently of dynein as a transcriptional modulator. Pseudogenes of this gene are found on chromosomes 2 and 20.[provided by RefSeq, Mar 2010],



Western blot analysis of lysates from U2OS cells, primary antibody was diluted at 1:1000, 4° over night

