

## RPAC2 rabbit pAb

Cat No.:ES9612

For research use only

### Overview

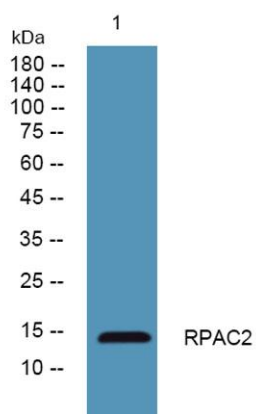
Product Name	RPAC2 rabbit pAb
Host species	Rabbit
Applications	WB;ELISA
Species Cross-Reactivity	Human;Rat;Mouse;
Recommended dilutions	WB 1:500-2000 ELISA 1:5000-20000
Immunogen	Synthesized peptide derived from part region of human protein
Specificity	RPAC2 Polyclonal Antibody detects endogenous levels of protein.
Formulation	Liquid in PBS containing 50% glycerol, 0.5% BSA and 0.02% sodium azide.
Storage	Store at -20°C. Avoid repeated freeze-thaw cycles.
Protein Name	DNA-directed RNA polymerases I and III subunit RPAC2 (RNA polymerases I and III subunit AC2) (AC19) (DNA-directed RNA polymerase I subunit D) (RNA polymerase I 16 kDa subunit) (RPA16) (RPC16) (hRPA19)
Gene Name	POLR1D
Cellular localization	nucleoplasm,DNA-directed RNA polymerase III complex,DNA-directed RNA polymerase I complex,cytosol,
Purification	The antibody was affinity-purified from rabbit antiserum by affinity-chromatography using epitope-specific immunogen.
Clonality	Polyclonal
Concentration	1 mg/ml
Observed band	14kD
Human Gene ID	51082
Human Swiss-Prot Number	Q9Y2S0
Alternative Names	
Background	The protein encoded by this gene is a component of the RNA polymerase I and RNA polymerase III complexes, which function in the synthesis of





**ELK Biotechnology**

ribosomal RNA precursors and small RNAs, respectively. Mutations in this gene are a cause of Treacher Collins syndrome (TCS), a craniofacial development disorder. Alternative splicing results in multiple transcript variants. [provided by RefSeq, Apr 2011],



Western blot analysis of lysates from SH-SY5Y cells, primary antibody was diluted at 1:1000, 4° over night



+86-27-59760950

[ELKbio@ELKbiotech.com](mailto:ELKbio@ELKbiotech.com)

[www.elkbiotech.com](http://www.elkbiotech.com)

23-2, No.388 Gaoxin 2nd Road, Wuhan East Lake Hi-tech Development Zone, Hubei, P.R.C