

RPC6 rabbit pAb

Cat No.:ES9609

For research use only

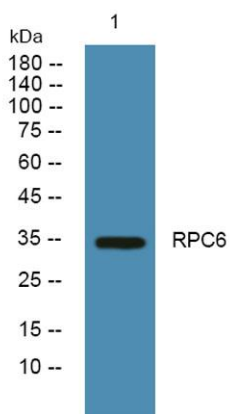
Overview

Product Name	RPC6 rabbit pAb
Host species	Rabbit
Applications	WB;ELISA
Species Cross-Reactivity	Human;Mouse
Recommended dilutions	WB 1:500-2000 ELISA 1:5000-20000
Immunogen	Synthesized peptide derived from part region of human protein
Specificity	RPC6 Polyclonal Antibody detects endogenous levels of protein.
Formulation	Liquid in PBS containing 50% glycerol, 0.5% BSA and 0.02% sodium azide.
Storage	Store at -20°C. Avoid repeated freeze-thaw cycles.
Protein Name	DNA-directed RNA polymerase III subunit RPC6 (RNA polymerase III subunit C6) (DNA-directed RNA polymerase III subunit F) (RNA polymerase III 39 kDa subunit) (RPC39)
Gene Name	POLR3F
Cellular localization	Nucleus .
Purification	The antibody was affinity-purified from rabbit antiserum by affinity-chromatography using epitope-specific immunogen.
Clonality	Polyclonal
Concentration	1 mg/ml
Observed band	34kD
Human Gene ID	10621
Human Swiss-Prot Number	Q9H1D9
Alternative Names	
Background	The protein encoded by this gene is one of more than a dozen subunits forming eukaryotic RNA polymerase III (RNA Pol III), which transcribes 5S ribosomal RNA and tRNA genes. This protein has been shown to bind both TFIIIB90 and TBP, two subunits of RNA polymerase III transcription





initiation factor IIIB (TFIIIB). Unlike most of the other RNA Pol III subunits, the encoded protein is unique to this polymerase. Alternative splicing results in multiple transcript variants. [provided by RefSeq, Sep 2013],



Western blot analysis of lysates from KB cells, primary antibody was diluted at 1:1000, 4°over night

