

# ABC3H rabbit pAb

Cat No.:ES9590

For research use only

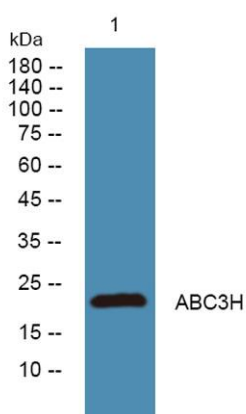
## Overview

Product Name	ABC3H rabbit pAb
Host species	Rabbit
Applications	WB;ELISA
Species Cross-Reactivity	Human;Rat;Mouse;
Recommended dilutions	WB 1:500-2000 ELISA 1:5000-20000
Immunogen	Synthesized peptide derived from part region of human protein
Specificity	ABC3H Polyclonal Antibody detects endogenous levels of protein.
Formulation	Liquid in PBS containing 50% glycerol, 0.5% BSA and 0.02% sodium azide.
Storage	Store at -20°C. Avoid repeated freeze-thaw cycles.
Protein Name	DNA dC->dU-editing enzyme APOBEC-3H (EC 3.5.4.-) (APOBEC-related protein 10) (ARP-10) (Apolipoprotein B mRNA-editing enzyme catalytic polypeptide-like 3H)
Gene Name	APOBEC3H
Cellular localization	Nucleus. Cytoplasm. Cytoplasm, P-body. Haplotype 1 is distributed in both the nucleus and cytoplasm, whereas haplotype 2 is predominantly cytoplasmic.
Purification	The antibody was affinity-purified from rabbit antiserum by affinity-chromatography using epitope-specific immunogen.
Clonality	Polyclonal
Concentration	1 mg/ml
Observed band	22kD
Human Gene ID	164668
Human Swiss-Prot Number	Q6NTF7
Alternative Names	
Background	This gene encodes a member of the apolipoprotein B mRNA-editing enzyme catalytic polypeptide 3 family of proteins. The encoded protein is a cytidine deaminase that has antiretroviral activity by





generating lethal hypermutations in viral genomes. Polymorphisms and alternative splicing in this gene influence its antiretroviral activity and are associated with increased resistance to human immunodeficiency virus type 1 infection in certain populations. Alternative splicing results in multiple transcript variants.[provided by RefSeq, Oct 2009],



Western blot analysis of lysates from Jarkat cells, primary antibody was diluted at 1:1000, 4°over night

