



CAMLG rabbit pAb

Cat No.:ES9465

For research use only

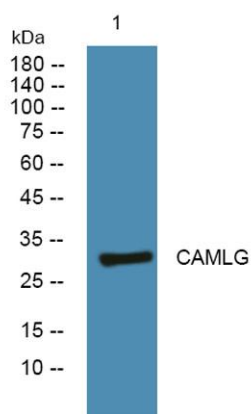
Overview

| | |
|--------------------------|---|
| Product Name | CAMLG rabbit pAb |
| Host species | Rabbit |
| Applications | WB;ELISA |
| Species Cross-Reactivity | Human;Rat;Mouse; |
| Recommended dilutions | WB 1:500-2000 ELISA 1:5000-20000 |
| Immunogen | Synthesized peptide derived from part region of human protein |
| Specificity | CAMLG Polyclonal Antibody detects endogenous levels of protein. |
| Formulation | Liquid in PBS containing 50% glycerol, 0.5% BSA and 0.02% sodium azide. |
| Storage | Store at -20°C. Avoid repeated freeze-thaw cycles. |
| Protein Name | Calcium signal-modulating cyclophilin ligand (CAML) |
| Gene Name | CAMLG CAML |
| Cellular localization | Endoplasmic reticulum membrane ; Multi-pass membrane protein . |
| Purification | The antibody was affinity-purified from rabbit antiserum by affinity-chromatography using epitope-specific immunogen. |
| Clonality | Polyclonal |
| Concentration | 1 mg/ml |
| Observed band | 32kD |
| Human Gene ID | 819 |
| Human Swiss-Prot Number | P49069 |
| Alternative Names | |
| Background | The immunosuppressant drug cyclosporin A blocks a calcium-dependent signal from the T-cell receptor (TCR) that normally leads to T-cell activation. When bound to cyclophilin B, cyclosporin A binds and inactivates the key signaling intermediate calcineurin. The protein encoded by this gene functions similarly to cyclosporin A, binding to cyclophilin B and acting downstream of the TCR and |





upstream of calcineurin by causing an influx of calcium. This integral membrane protein appears to be a new participant in the calcium signal transduction pathway, implicating cyclophilin B in calcium signaling, even in the absence of cyclosporin. [provided by RefSeq, Jul 2008],



Western blot analysis of lysates from U2OS cells, primary antibody was diluted at 1:1000, 4° over night

