

# POPD1 rabbit pAb

Cat No.:ES9454

For research use only

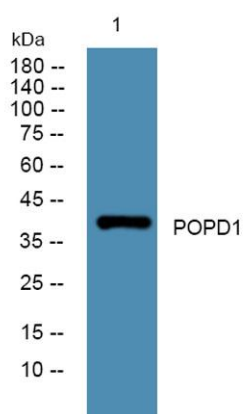
## Overview

Product Name	POPD1 rabbit pAb
Host species	Rabbit
Applications	WB;ELISA
Species Cross-Reactivity	Human;Mouse;Rat
Recommended dilutions	WB 1:500-2000 ELISA 1:5000-20000
Immunogen	Synthesized peptide derived from part region of human protein
Specificity	POPD1 Polyclonal Antibody detects endogenous levels of protein.
Formulation	Liquid in PBS containing 50% glycerol, 0.5% BSA and 0.02% sodium azide.
Storage	Store at -20°C. Avoid repeated freeze-thaw cycles.
Protein Name	Blood vessel epicardial substance (hBVES) (Popeye domain-containing protein 1) (Popeye protein 1)
Gene Name	BVES POP1 POPDC1
Cellular localization	Lateral cell membrane . Cell junction, tight junction . Membrane ; Multi-pass membrane protein . Cell membrane, sarcolemma . Membrane, caveola . Colocalizes with VAMP3 at the cell-cell contact in cardiac and skeletal muscle (By similarity). Its movement f
Purification	The antibody was affinity-purified from rabbit antiserum by affinity-chromatography using epitope-specific immunogen.
Clonality	Polyclonal
Concentration	1 mg/ml
Observed band	39kD
Human Gene ID	11149
Human Swiss-Prot Number	Q8NE79
Alternative Names	
Background	blood vessel epicardial substance(BVES) Homo sapiens This gene encodes a member of the POP family of proteins containing three putative





transmembrane domains. This gene is expressed in cardiac and skeletal muscle and may play an important role in development of these tissues. The mouse ortholog may be involved in the regeneration of adult skeletal muscle and may act as a cell adhesion molecule in coronary vasculogenesis. Three transcript variants encoding the same protein have been found for this gene. [provided by RefSeq, Dec 2010],



Western blot analysis of lysates from SW480 cells, primary antibody was diluted at 1:1000, 4° over night

