



## B3GT6 rabbit pAb

Cat No.:ES9446

For research use only

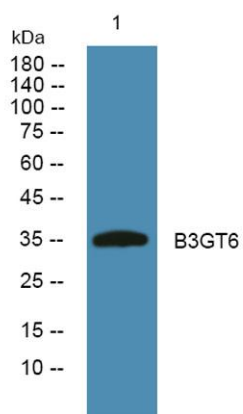
### Overview

Product Name	B3GT6 rabbit pAb
Host species	Rabbit
Applications	WB;ELISA
Species Cross-Reactivity	Human;Rat;Mouse;
Recommended dilutions	WB 1:500-2000 ELISA 1:5000-20000
Immunogen	Synthesized peptide derived from human protein . at AA range: 50-130
Specificity	B3GT6 Polyclonal Antibody detects endogenous levels of protein.
Formulation	Liquid in PBS containing 50% glycerol, 0.5% BSA and 0.02% sodium azide.
Storage	Store at -20°C. Avoid repeated freeze-thaw cycles.
Protein Name	Beta-1,3-galactosyltransferase 6 (Beta-1,3-GalTase 6) (Beta3Gal-T6) (Beta3GalT6) (EC 2.4.1.134) (GAG GalTII) (Galactosyltransferase II) (Galactosylxylosylprotein 3-beta-galactosyltransferase) (UDP-Gal
Gene Name	B3GALT6
Cellular localization	Golgi apparatus, Golgi stack membrane ; Single-pass type II membrane protein .
Purification	The antibody was affinity-purified from rabbit antiserum by affinity-chromatography using epitope-specific immunogen.
Clonality	Polyclonal
Concentration	1 mg/ml
Observed band	36kD
Human Gene ID	126792
Human Swiss-Prot Number	Q96L58
Alternative Names	
Background	The enzyme encoded by this intronless gene is a beta-1,3-galactosyltransferase found in the medial Golgi apparatus, where it catalyzes the transfer of galactose from UDP-galactose to substrates





containing a terminal beta-linked galactose moiety. The encoded enzyme has a particular affinity for galactose-beta-1,4-xylose found in the linker region of glycosamines. This enzyme is required for glycosaminoglycan synthesis. [provided by RefSeq, Jun 2013],



Western blot analysis of lysates from A431 cells, primary antibody was diluted at 1:1000, 4° over night

