

# BNIPL rabbit pAb

Cat No.:ES9442

For research use only

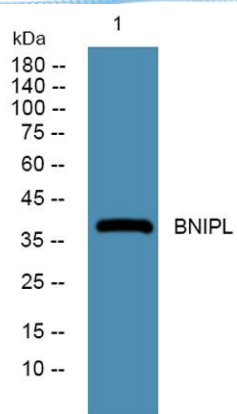
## Overview

Product Name	BNIPL rabbit pAb
Host species	Rabbit
Applications	WB;ELISA
Species Cross-Reactivity	Human;Rat;Mouse;
Recommended dilutions	WB 1:500-2000 ELISA 1:5000-20000
Immunogen	Synthesized peptide derived from human protein . at AA range: 40-120
Specificity	BNIPL Polyclonal Antibody detects endogenous levels of protein.
Formulation	Liquid in PBS containing 50% glycerol, 0.5% BSA and 0.02% sodium azide.
Storage	Store at -20°C. Avoid repeated freeze-thaw cycles.
Protein Name	Bcl-2/adenovirus E1B 19 kDa-interacting protein 2-like protein
Gene Name	BNIPL
Cellular localization	nucleus,cytosol,
Purification	The antibody was affinity-purified from rabbit antiserum by affinity-chromatography using epitope-specific immunogen.
Clonality	Polyclonal
Concentration	1 mg/ml
Observed band	39kD
Human Gene ID	149428
Human Swiss-Prot Number	Q7Z465
Alternative Names	
Background	The protein encoded by this gene interacts with several other proteins, such as BCL2, ARHGAP1, MIF and GFER. It may function as a bridge molecule between BCL2 and ARHGAP1/CDC42 in promoting cell death. Alternatively spliced transcript variants encoding different isoforms have been described for this gene. [provided by RefSeq, Aug 2011],





**ELK Biotechnology**



Western blot analysis of lysates from K562 cells, primary antibody was diluted at 1:1000, 4° over night



+86-27-59760950

ELKbio@ELKbiotech.com

[www.elkbiotech.com](http://www.elkbiotech.com)

23-2, No.388 Gaoxin 2nd Road, Wuhan East Lake Hi-tech Development Zone, Hubei, P.R.C.