

# ADA rabbit pAb

Cat No.:ES9364

For research use only

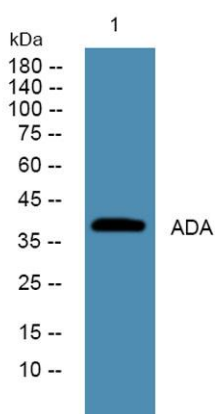
## Overview

Product Name	ADA rabbit pAb
Host species	Rabbit
Applications	WB;ELISA
Species Cross-Reactivity	Human;Rat;Mouse;
Recommended dilutions	WB 1:500-2000 ELISA 1:5000-20000
Immunogen	Synthesized peptide derived from human protein . at AA range: 80-160
Specificity	ADA Polyclonal Antibody detects endogenous levels of protein.
Formulation	Liquid in PBS containing 50% glycerol, 0.5% BSA and 0.02% sodium azide.
Storage	Store at -20°C. Avoid repeated freeze-thaw cycles.
Protein Name	Adenosine deaminase (EC 3.5.4.4) (Adenosine aminohydrolase)
Gene Name	ADA ADA1
Cellular localization	Cell membrane ; Peripheral membrane protein; Extracellular side. Cell junction . Cytoplasmic vesicle lumen . Cytoplasm . Lysosome . Colocalized with DPP4 at the cell surface. .
Purification	The antibody was affinity-purified from rabbit antiserum by affinity-chromatography using epitope-specific immunogen.
Clonality	Polyclonal
Concentration	1 mg/ml
Observed band	39kD
Human Gene ID	100
Human Swiss-Prot Number	P00813
Alternative Names	
Background	This gene encodes an enzyme that catalyzes the hydrolysis of adenosine to inosine. Various mutations have been described for this gene and have been linked to human diseases. Deficiency in this enzyme causes a form of severe combined





immunodeficiency disease (SCID), in which there is dysfunction of both B and T lymphocytes with impaired cellular immunity and decreased production of immunoglobulins, whereas elevated levels of this enzyme have been associated with congenital hemolytic anemia. [provided by RefSeq, Jul 2008],



Western blot analysis of lysates from K562 cells, primary antibody was diluted at 1:1000, 4°over night

