



ADAM9 rabbit pAb

Cat No.:ES9357

For research use only

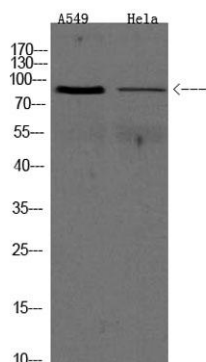
Overview

Product Name	ADAM9 rabbit pAb
Host species	Rabbit
Applications	WB;ELISA
Species Cross-Reactivity	Human;Rat;Mouse;
Recommended dilutions	WB 1:500-2000 ELISA 1:5000-20000
Immunogen	Synthesized peptide derived from human protein . at AA range: 120-200
Specificity	ADAM9 Polyclonal Antibody detects endogenous levels of protein.
Formulation	Liquid in PBS containing 50% glycerol, 0.5% BSA and 0.02% sodium azide.
Storage	Store at -20°C. Avoid repeated freeze-thaw cycles.
Protein Name	Disintegrin and metalloproteinase domain-containing protein 9 (ADAM 9) (EC 3.4.24.-) (Cellular disintegrin-related protein) (Meltrin-gamma) (Metalloprotease/disintegrin/cysteine-rich protein 9) (Myelo
Gene Name	ADAM9 KIAA0021 MCMP MDC9 MLTNG
Cellular localization	[Isoform 1]: Cell membrane ; Single-pass type I membrane protein .; [Isoform 2]: Secreted .
Purification	The antibody was affinity-purified from rabbit antiserum by affinity-chromatography using epitope-specific immunogen.
Clonality	Polyclonal
Concentration	1 mg/ml
Observed band	90kD
Human Gene ID	8754
Human Swiss-Prot Number	Q13443
Alternative Names	
Background	This gene encodes a member of the ADAM (a disintegrin and metalloprotease domain) family. Members of this family are membrane-anchored





proteins structurally related to snake venom disintegrins, and have been implicated in a variety of biological processes involving cell-cell and cell-matrix interactions, including fertilization, muscle development, and neurogenesis. The protein encoded by this gene interacts with SH3 domain-containing proteins, binds mitotic arrest deficient 2 beta protein, and is also involved in TPA-induced ectodomain shedding of membrane-anchored heparin-binding EGF-like growth factor. Several alternatively spliced transcript variants have been identified for this gene. [provided by RefSeq, Jul 2010],



Western Blot analysis of various cell lysis. Primary Antibody was diluted at 1:1000. Secondary antibody(catalog#:RS23920 was diluted at 1:10000

