



FMR1N rabbit pAb

Cat No.:ES9280

For research use only

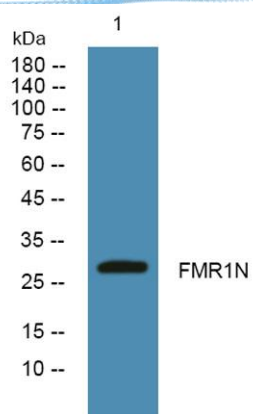
Overview

Product Name	FMR1N rabbit pAb
Host species	Rabbit
Applications	WB;ELISA
Species Cross-Reactivity	Human;Rat;Mouse;
Recommended dilutions	WB 1:500-2000 ELISA 1:5000-20000
Immunogen	Synthesized peptide derived from human protein . at AA range: 180-260
Specificity	FMR1N Polyclonal Antibody detects endogenous levels of protein.
Formulation	Liquid in PBS containing 50% glycerol, 0.5% BSA and 0.02% sodium azide.
Storage	Store at -20°C. Avoid repeated freeze-thaw cycles.
Protein Name	Fragile X mental retardation 1 neighbor protein (Cancer/testis antigen 37) (CT37) (Sarcoma antigen NY-SAR-35)
Gene Name	FMR1NB
Cellular localization	Membrane ; Multi-pass membrane protein .
Purification	The antibody was affinity-purified from rabbit antiserum by affinity-chromatography using epitope-specific immunogen.
Clonality	Polyclonal
Concentration	1 mg/ml
Observed band	28kD
Human Gene ID	158521
Human Swiss-Prot Number	Q8NOW7
Alternative Names	
Background	similarity:Contains 1 P-type (trefoil) domain.,tissue specificity:Testis-specific. Expressed in melanoma, sarcoma, lung, breast, bladder, esophageal and ovarian cancers.,





ELK Biotechnology



Western blot analysis of lysates from Jarkat cells, primary antibody was diluted at 1:1000, 4° over night



+86-27-59760950

ELKbio@ELKbiotech.com

www.elkbiotech.com

23-2, No.388 Gaoxin 2nd Road, Wuhan East Lake Hi-tech Development Zone, Hubei, P.R.C.