

# CENPQ rabbit pAb

Cat No.:ES9255

For research use only

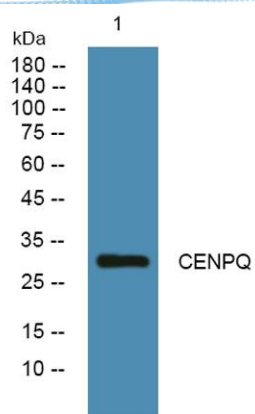
## Overview

|                          |   |
|--------------------------|---|
| Product Name             | CENPQ rabbit pAb  |
| Host species             | Rabbit  |
| Applications             | WB;ELISA  |
| Species Cross-Reactivity | Human;Rat;Mouse;  |
| Recommended dilutions    | WB 1:500-2000 ELISA 1:5000-20000  |
| Immunogen                | Synthesized peptide derived from human protein .<br>at AA range: 90-170   |
| Specificity              | CENPQ Polyclonal Antibody detects endogenous<br>levels of protein.  |
| Formulation              | Liquid in PBS containing 50% glycerol, 0.5% BSA and<br>0.02% sodium azide.  |
| Storage                  | Store at -20°C. Avoid repeated freeze-thaw cycles.  |
| Protein Name             | Centromere protein Q (CENP-Q)   |
| Gene Name                | CENPQ C6orf139  |
| Cellular localization    | Nucleus . Chromosome, centromere . Localizes<br>exclusively in the centromeres. The CENPA-CAD<br>complex is probably recruited on centromeres by<br>the CENPA-NAC complex.  |
| Purification             | The antibody was affinity-purified from rabbit<br>antiserum by affinity-chromatography using<br>epitope-specific immunogen.   |
| Clonality                | Polyclonal  |
| Concentration            | 1 mg/ml   |
| Observed band            | 29kD  |
| Human Gene ID            | 55166   |
| Human Swiss-Prot Number  | Q7L2Z9  |
| Alternative Names        |   |
| Background               | CENPQ is a subunit of a CENPH (MIM 605607)-CENPI<br>(MIM 300065)-associated centromeric complex that<br>targets CENPA (MIM 117139) to centromeres and is<br>required for proper kinetochore function and<br>mitotic progression (Okada et al., 2006 [PubMed<br>16622420]).[supplied by OMIM, Mar 2008], |





**ELK Biotechnology**



Western blot analysis of lysates from SH-SY5Y cells,  
primary antibody was diluted at 1:1000, 4° over night



+86-27-59760950

ELKbio@ELKbiotech.com

[www.elkbiotech.com](http://www.elkbiotech.com)

23-2, No.388 Gaoxin 2nd Road, Wuhan East Lake Hi-tech Development Zone, Hubei, P.R.C.