

CIDEA rabbit pAb

Cat No.:ES9248

For research use only

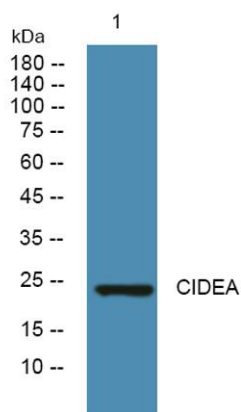
Overview

Product Name	CIDEA rabbit pAb
Host species	Rabbit
Applications	WB;ELISA
Species Cross-Reactivity	Human;Rat;Mouse;
Recommended dilutions	WB 1:500-2000 ELISA 1:5000-20000
Immunogen	Synthesized peptide derived from human protein . at AA range: 140-220
Specificity	CIDEA Polyclonal Antibody detects endogenous levels of protein.
Formulation	Liquid in PBS containing 50% glycerol, 0.5% BSA and 0.02% sodium azide.
Storage	Store at -20°C. Avoid repeated freeze-thaw cycles.
Protein Name	Cell death activator CIDE-A (Cell death-inducing DFFA-like effector A)
Gene Name	CIDEA
Cellular localization	Lipid droplet . Nucleus . Enriched at lipid droplet contact sites. Has been shown to localize to mitochondria, where it could interact with UCP1 and hence inhibit UCP1 uncoupling activity (By similarity). These data could not be confirmed (PubMed:18509062
Purification	The antibody was affinity-purified from rabbit antiserum by affinity-chromatography using epitope-specific immunogen.
Clonality	Polyclonal
Concentration	1 mg/ml
Observed band	24kD
Human Gene ID	1149
Human Swiss-Prot Number	O60543
Alternative Names	
Background	cell death-inducing DFFA-like effector a(CIDEA) Homo sapiens This gene encodes the homolog of the mouse protein Cidea that has been shown to





activate apoptosis. This activation of apoptosis is inhibited by the DNA fragmentation factor DFF45 but not by caspase inhibitors. Mice that lack functional Cidea have higher metabolic rates, higher lipolysis in brown adipose tissue and higher core body temperatures when subjected to cold. These mice are also resistant to diet-induced obesity and diabetes. This suggests that in mice this gene product plays a role in thermogenesis and lipolysis. Alternatively spliced transcripts have been identified. [provided by RefSeq, Aug 2010],



Western blot analysis of lysates from DU145 cells, primary antibody was diluted at 1:1000, 4° over night

