

MAGC3 rabbit pAb

Cat No.:ES9205

For research use only

Overview

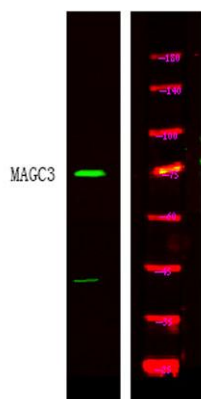
Product Name	MAGC3 rabbit pAb
Host species	Rabbit
Applications	WB;ELISA
Species Cross-Reactivity	Human;Rat;Mouse;
Recommended dilutions	WB 1:500-2000 ELISA 1:5000-20000
Immunogen	Synthesized peptide derived from human protein . at AA range: 60-140
Specificity	MAGC3 Polyclonal Antibody detects endogenous levels of protein.
Formulation	Liquid in PBS containing 50% glycerol, 0.5% BSA and 0.02% sodium azide.
Storage	Store at -20°C. Avoid repeated freeze-thaw cycles.
Protein Name	Melanoma-associated antigen C3 (Cancer/testis antigen 7.2) (CT7.2) (Hepatocellular carcinoma-associated antigen 2) (MAGE-C3 antigen)
Gene Name	MAGEC3 HCA2
Cellular localization	
Purification	The antibody was affinity-purified from rabbit antiserum by affinity-chromatography using epitope-specific immunogen.
Clonality	Polyclonal
Concentration	1 mg/ml
Observed band	70kD
Human Gene ID	139081
Human Swiss-Prot Number	Q8TD91
Alternative Names	
Background	This gene is a member of the MAGEC gene family. The members of this family are not expressed in normal tissues, except for testis, and are expressed in tumors of various histological types. The MAGEC genes are clustered on chromosome Xq26-q27. Two transcript variants encoding distinct isoforms have been found for this gene. [provided by RefSeq, Jul





ELK Biotechnology

2008],



Western Blot analysis of HEK293 lysis, using primary antibody at 1:1000 dilution. Secondary antibody(catalog#:RS23920) was diluted at 1:10000



+86-27-59760950

ELKbio@ELKbiotech.com

www.elkbiotech.com

23-2, No.388 Gaoxin 2nd Road,Wuhan East Lake Hi-tech Development Zone, Hubei , P.R.C