



# CY561 rabbit pAb

Cat No.:ES9138

For research use only

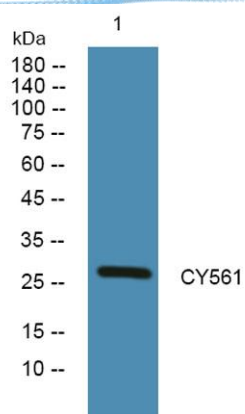
## Overview

Product Name	CY561 rabbit pAb
Host species	Rabbit
Applications	WB;ELISA
Species Cross-Reactivity	Human;Mouse
Recommended dilutions	WB 1:500-2000 ELISA 1:5000-20000
Immunogen	Synthesized peptide derived from human protein . at AA range: 30-110
Specificity	CY561 Polyclonal Antibody detects endogenous levels of protein.
Formulation	Liquid in PBS containing 50% glycerol, 0.5% BSA and 0.02% sodium azide.
Storage	Store at -20°C. Avoid repeated freeze-thaw cycles.
Protein Name	Cytochrome b561 (Cytochrome b-561)
Gene Name	CYB561
Cellular localization	Cytoplasmic vesicle, secretory vesicle, chromaffin granule membrane ; Multi-pass membrane protein . Secretory vesicle containing catecholamines and amidated peptides. .
Purification	The antibody was affinity-purified from rabbit antiserum by affinity-chromatography using epitope-specific immunogen.
Clonality	Polyclonal
Concentration	1 mg/ml
Observed band	27kD
Human Gene ID	1534
Human Swiss-Prot Number	P49447
Alternative Names	
Background	cofactor:Binds 2 heme groups non-covalently.,function:Secretory vesicle-specific electron transport protein.,similarity:Contains 1 cytochrome b561 domain.,





**ELK Biotechnology**



Western blot analysis of lysates from U2OS cells, primary antibody was diluted at 1:1000, 4° over night



+86-27-59760950

ELKbio@ELKbiotech.com

[www.elkbiotech.com](http://www.elkbiotech.com)

23-2, No.388 Gaoxin 2nd Road, Wuhan East Lake Hi-tech Development Zone, Hubei, P.R.C.