

SPT4H rabbit pAb

Cat No.:ES9045

For research use only

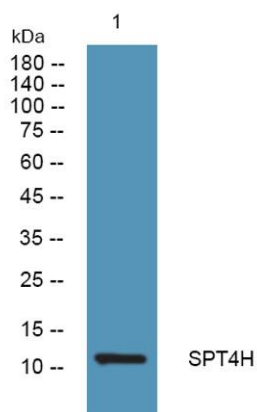
Overview

Product Name	SPT4H rabbit pAb
Host species	Rabbit
Applications	WB;ELISA
Species Cross-Reactivity	Human;Rat;Mouse;
Recommended dilutions	WB 1:500-2000 ELISA 1:5000-20000
Immunogen	Synthesized peptide derived from human protein . at AA range: 40-120
Specificity	SPT4H Polyclonal Antibody detects endogenous levels of protein.
Formulation	Liquid in PBS containing 50% glycerol, 0.5% BSA and 0.02% sodium azide.
Storage	Store at -20°C. Avoid repeated freeze-thaw cycles.
Protein Name	Transcription elongation factor SPT4 (hSPT4) (DRB sensitivity-inducing factor 14 kDa subunit) (DSIF p14) (DRB sensitivity-inducing factor small subunit) (DSIF small subunit)
Gene Name	SUPT4H1 SPT4H SUPT4H
Cellular localization	Nucleus .
Purification	The antibody was affinity-purified from rabbit antiserum by affinity-chromatography using epitope-specific immunogen.
Clonality	Polyclonal
Concentration	1 mg/ml
Observed band	12kD
Human Gene ID	6827
Human Swiss-Prot Number	P63272
Alternative Names	
Background	This gene encodes the small subunit of DRB (5,6-dichloro-1-beta-d-ribofuranosylbenzimidazole) sensitivity-inducing factor (DSIF) complex, which regulates mRNA processing and transcription elongation by RNA polymerase II. The encoded protein is localized to the nucleus and interacts with





the large subunit (SUPT5H) to form the DSIF complex. Related pseudogenes have been identified on chromosomes 2 and 12. Alternatively spliced transcript variants have been found for this gene. [provided by RefSeq, Nov 2012],



Western blot analysis of lysates from K562 cells, primary antibody was diluted at 1:1000, 4° over night

