



# MRP rabbit pAb

Cat No.:ES9040

For research use only

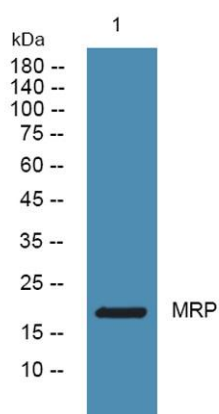
## Overview

Product Name	MRP rabbit pAb
Host species	Rabbit
Applications	WB;ELISA
Species Cross-Reactivity	Human;Mouse;Rat
Recommended dilutions	WB 1:500-2000 ELISA 1:5000-20000
Immunogen	Synthesized peptide derived from human protein . at AA range: 1-80
Specificity	MRP Polyclonal Antibody detects endogenous levels of protein.
Formulation	Liquid in PBS containing 50% glycerol, 0.5% BSA and 0.02% sodium azide.
Storage	Store at -20°C. Avoid repeated freeze-thaw cycles.
Protein Name	MARCKS-related protein (MARCKS-like protein 1) (Macrophage myristoylated alanine-rich C kinase substrate) (Mac-MARCKS) (MacMARCKS)
Gene Name	MARCKSL1 MLP MRP
Cellular localization	Cytoplasm, cytoskeleton . Cell membrane ; Lipid-anchor . Associates with the membrane via the insertion of the N-terminal N-myristoyl chain and the partial insertion of the effector domain. Association of the effector domain with membranes may be regulate
Purification	The antibody was affinity-purified from rabbit antiserum by affinity-chromatography using epitope-specific immunogen.
Clonality	Polyclonal
Concentration	1 mg/ml
Observed band	21kD
Human Gene ID	65108
Human Swiss-Prot Number	P49006
Alternative Names	
Background	MARCKS like 1(MARCKSL1) Homo sapiens      This gene encodes a member of the myristoylated





alanine-rich C-kinase substrate (MARCKS) family. Members of this family play a role in cytoskeletal regulation, protein kinase C signaling and calmodulin signaling. The encoded protein affects the formation of adherens junction. Alternative splicing results in multiple transcript variants. Pseudogenes of this gene are located on the long arm of chromosomes 6 and 10. [provided by RefSeq, Jun 2012],



Western blot analysis of lysates from SH-SY5Y cells, primary antibody was diluted at 1:1000, 4°over night

