

# MSX1 rabbit pAb

Cat No.:ES9038

For research use only

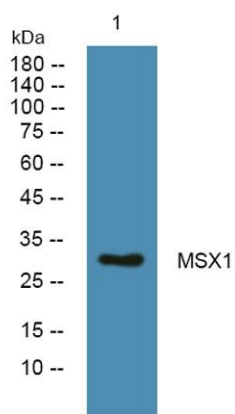
## Overview

Product Name	MSX1 rabbit pAb
Host species	Rabbit
Applications	WB;ELISA
Species Cross-Reactivity	Human;Mouse
Recommended dilutions	WB 1:500-2000 ELISA 1:5000-20000
Immunogen	Synthesized peptide derived from human protein . at AA range: 70-150
Specificity	MSX1 Polyclonal Antibody detects endogenous levels of protein.
Formulation	Liquid in PBS containing 50% glycerol, 0.5% BSA and 0.02% sodium azide.
Storage	Store at -20°C. Avoid repeated freeze-thaw cycles.
Protein Name	Homeobox protein MSX-1 (Homeobox protein Hox-7) (Msh homeobox 1-like protein)
Gene Name	MSX1 HOX7
Cellular localization	Nucleus.
Purification	The antibody was affinity-purified from rabbit antiserum by affinity-chromatography using epitope-specific immunogen.
Clonality	Polyclonal
Concentration	1 mg/ml
Observed band	32kD
Human Gene ID	4487
Human Swiss-Prot Number	P28360
Alternative Names	
Background	This gene encodes a member of the muscle segment homeobox gene family. The encoded protein functions as a transcriptional repressor during embryogenesis through interactions with components of the core transcription complex and other homeoproteins. It may also have roles in limb-pattern formation, craniofacial development, particularly odontogenesis, and tumor growth





inhibition. Mutations in this gene, which was once known as homeobox 7, have been associated with nonsyndromic cleft lip with or without cleft palate 5, Witkop syndrome, Wolf-Hirschorn syndrome, and autosomal dominant hypodontia. [provided by RefSeq, Jul 2008],



Western blot analysis of lysates from PC12 cells, primary antibody was diluted at 1:1000, 4° over night

