

SPHK1 rabbit pAb

Cat No.:ES8981

For research use only

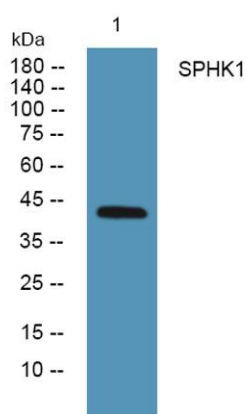
Overview

Product Name	SPHK1 rabbit pAb
Host species	Rabbit
Applications	WB;ELISA
Species Cross-Reactivity	Human;Rat;Mouse;
Recommended dilutions	WB 1:500-2000 ELISA 1:5000-20000
Immunogen	Synthesized peptide derived from human protein . at AA range: 160-240
Specificity	SPHK1 Polyclonal Antibody detects endogenous levels of protein.
Formulation	Liquid in PBS containing 50% glycerol, 0.5% BSA and 0.02% sodium azide.
Storage	Store at -20°C. Avoid repeated freeze-thaw cycles.
Protein Name	Sphingosine kinase 1 (SK 1) (SPK 1) (EC 2.7.1.91)
Gene Name	SPHK1 SPHK SPK
Cellular localization	Cytoplasm . Nucleus . Cell membrane . Endosome membrane ; Peripheral membrane protein . Membrane, clathrin-coated pit . Cell junction, synapse . Translocated from the cytoplasm to the plasma membrane in a CIB1-dependent manner (PubMed:19854831). Binds to
Purification	The antibody was affinity-purified from rabbit antiserum by affinity-chromatography using epitope-specific immunogen.
Clonality	Polyclonal
Concentration	1 mg/ml
Observed band	42kD
Human Gene ID	8877
Human Swiss-Prot Number	Q9NYA1
Alternative Names	
Background	The protein encoded by this gene catalyzes the phosphorylation of sphingosine to form sphingosine-1-phosphate (S1P), a lipid mediator with both intra- and extracellular functions.





Intracellularly, S1P regulates proliferation and survival, and extracellularly, it is a ligand for cell surface G protein-coupled receptors. This protein, and its product S1P, play a key role in TNF-alpha signaling and the NF-kappa-B activation pathway important in inflammatory, antiapoptotic, and immune processes. Alternatively spliced transcript variants encoding different isoforms have been found for this gene. [provided by RefSeq, Sep 2011],



Western blot analysis of lysates from HCT116 cells, primary antibody was diluted at 1:1000, 4°over night

