

# Tmem72 rabbit pAb

Cat No.:ES8945

For research use only

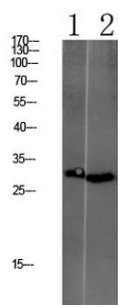
## Overview

|                          |  |
|--------------------------|--|
| Product Name             | Tmem72 rabbit pAb  |
| Host species             | Rabbit   |
| Applications             | WB;ELISA   |
| Species Cross-Reactivity | Human;Mouse;Rat  |
| Recommended dilutions    | WB 1:500-2000, ELISA 1:10000-20000   |
| Immunogen                | Synthesized peptide derived from human Tmem72<br>Polyclonal  |
| Specificity              | This antibody detects endogenous levels of<br>Tmem72.  |
| Formulation              | Liquid in PBS containing 50% glycerol, 0.5% BSA and<br>0.02% sodium azide.   |
| Storage                  | Store at -20°C. Avoid repeated freeze-thaw cycles.   |
| Protein Name             | Transmembrane protein 72 (Kidney-specific<br>secretory protein of 37 kDa)  |
| Gene Name                | TMEM72 C10orf127 KSP37   |
| Cellular localization    | Membrane ; Multi-pass membrane protein .   |
| Purification             | The antibody was affinity-purified from rabbit<br>antiserum by affinity-chromatography using<br>epitope-specific immunogen.        |
| Clonality                | Polyclonal   |
| Concentration            | 1 mg/ml  |
| Observed band            | 30kD   |
| Human Gene ID            | 643236   |
| Human Swiss-Prot Number  | A0PK05   |
| Alternative Names        | Transmembrane protein 72 (Kidney-specific<br>secretory protein of 37 kDa)  |
| Background               | This gene encodes a transmembrane protein which<br>may be expressed specifically in the kidney.<br>[provided by RefSeq, Sep 2016], |





**ELK Biotechnology**



1 mouse-liver

2 CACO2

Western blot analysis of various lysate, antibody was diluted at 1000. Secondary antibody(catalog#:RS0002) was diluted at 1:20000



+86-27-59760950

[ELKbio@ELKbiotech.com](mailto:ELKbio@ELKbiotech.com)

[www.elkbiotech.com](http://www.elkbiotech.com)

23-2, No.388 Gaoxin 2nd Road,Wuhan East Lake Hi-tech Development Zone, Hubei , P.R.C