

PAR1 (Cleaved-Ser42) rabbit pAb

Cat No.:ES8942

For research use only

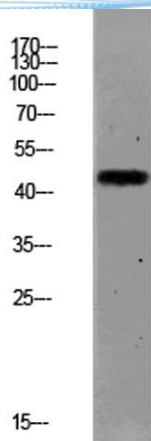
Overview

Product Name	PAR1 (Cleaved-Ser42) rabbit pAb
Host species	Rabbit
Applications	WB;ELISA
Species Cross-Reactivity	Human;Mouse;Rat
Recommended dilutions	WB 1:500-2000, ELISA 1:10000-20000
Immunogen	Synthesized peptide derived from human PAR1 (Cleaved-Ser42) Polyclonal
Specificity	This antibody detects endogenous levels of PAR1 (Cleaved-Ser42).
Formulation	Liquid in PBS containing 50% glycerol, 0.5% BSA and 0.02% sodium azide.
Storage	Store at -20°C. Avoid repeated freeze-thaw cycles.
Protein Name	Proteinase-activated receptor 1 (PAR-1) (Coagulation factor II receptor) (Thrombin receptor)
Gene Name	F2R CF2R PAR1 TR
Cellular localization	Cell membrane; Multi-pass membrane protein.
Purification	The antibody was affinity-purified from rabbit antiserum by affinity-chromatography using epitope-specific immunogen.
Clonality	Polyclonal
Concentration	1 mg/ml
Observed band	46kD
Human Gene ID	2149
Human Swiss-Prot Number	P25116
Alternative Names	Proteinase-activated receptor 1 (PAR-1) (Coagulation factor II receptor) (Thrombin receptor)
Background	Coagulation factor II receptor is a 7-transmembrane receptor involved in the regulation of thrombotic response. Proteolytic cleavage leads to the activation of the receptor. F2R is a G-protein coupled receptor family member. Alternative splicing results in multiple transcript variants. [provided by RefSeq, Aug 2015],





ELK Biotechnology



Western blot analysis of MCF-7 lysate, antibody was diluted at 1000. Secondary antibody(catalog#:RS0002) was diluted at 1:20000



+86-27-59760950

ELKbio@ELKbiotech.com

www.elkbiotech.com

23-2, No.388 Gaoxin 2nd Road,Wuhan East Lake Hi-tech Development Zone, Hubei , P.R.C