



# CLUS rabbit pAb

Cat No.:ES8926

For research use only

## Overview

<b>Product Name</b>	CLUS rabbit pAb
<b>Host species</b>	Rabbit
<b>Applications</b>	WB;ELISA
<b>Species Cross-Reactivity</b>	Human;Mouse;Rat
<b>Recommended dilutions</b>	WB 1:500-2000, ELISA 1:10000-20000
<b>Immunogen</b>	Synthesized peptide derived from human CLUS Polyclonal
<b>Specificity</b>	This antibody detects endogenous levels of CLUS.
<b>Formulation</b>	Liquid in PBS containing 50% glycerol, 0.5% BSA and 0.02% sodium azide.
<b>Storage</b>	Store at -20°C. Avoid repeated freeze-thaw cycles.
<b>Protein Name</b>	Clusterin (Aging-associated gene 4 protein) (Apolipoprotein J) (Apo-J) (Complement cytolysis inhibitor) (CLI) (Complement-associated protein SP-40,40) (Ku70-binding protein 1) (NA1/NA2) (Testosterone-
<b>Gene Name</b>	CLU APOJ CLI KUB1 AAG4
<b>Cellular localization</b>	[Isoform 1]: Secreted . Can retrotranslocate from the secretory compartments to the cytosol upon cellular stress. .; [Isoform 4]: Cytoplasm . Keeps cytoplasmic localization in stressed and unstressed cell. .; [Isoform 6]: Cytoplasm . Keeps cytoplasmic loc
<b>Purification</b>	The antibody was affinity-purified from rabbit antiserum by affinity-chromatography using epitope-specific immunogen.
<b>Clonality</b>	Polyclonal
<b>Concentration</b>	1 mg/ml
<b>Observed band</b>	52kD
<b>Human Gene ID</b>	1191
<b>Human Swiss-Prot Number</b>	P10909
<b>Alternative Names</b>	Clusterin (Aging-associated gene 4 protein) (Apolipoprotein J) (Apo-J) (Complement cytolysis inhibitor) (CLI) (Complement-associated protein

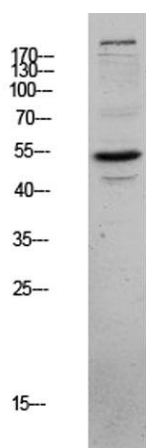




## Background

SP-40,40) (Ku70-binding protein 1) (NA1/NA2)  
(Testosterone-repressed prostate message 2)  
(TRPM-2) [Cleaved into: C

The protein encoded by this gene is a secreted chaperone that can under some stress conditions also be found in the cell cytosol. It has been suggested to be involved in several basic biological events such as cell death, tumor progression, and neurodegenerative disorders. Alternate splicing results in both coding and non-coding variants.[provided by RefSeq, May 2011],



Western blot analysis of MCF-7 lysate, antibody was diluted at 1000. Secondary antibody(catalog#:RS0002) was diluted at 1:20000

