

Collagen XI α 1 rabbit pAb

Cat No.:ES8925

For research use only

Overview

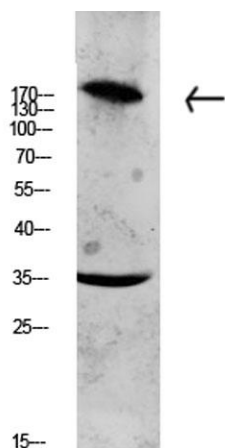
Product Name	Collagen XI α 1 rabbit pAb
Host species	Rabbit
Applications	WB;ELISA
Species Cross-Reactivity	Human;Mouse;Rat
Recommended dilutions	WB 1:500-2000, ELISA 1:10000-20000
Immunogen	Synthesized peptide derived from human Collagen XI α 1 Polyclonal
Specificity	This antibody detects endogenous levels of Collagen XI α 1.
Formulation	Liquid in PBS containing 50% glycerol, 0.5% BSA and 0.02% sodium azide.
Storage	Store at -20°C. Avoid repeated freeze-thaw cycles.
Protein Name	Collagen alpha-1(XI) chain
Gene Name	COL11A1 COL6
Cellular localization	Secreted, extracellular space, extracellular matrix .
Purification	The antibody was affinity-purified from rabbit antiserum by affinity-chromatography using epitope-specific immunogen.
Clonality	Polyclonal
Concentration	1 mg/ml
Observed band	180kD
Human Gene ID	1301
Human Swiss-Prot Number	P12107
Alternative Names	Collagen alpha-1(XI) chain
Background	collagen type XI alpha 1 chain(COL11A1) Homo sapiens This gene encodes one of the two alpha chains of type XI collagen, a minor fibrillar collagen. Type XI collagen is a heterotrimer but the third alpha chain is a post-translationally modified alpha 1 type II chain. Mutations in this gene are associated with type II Stickler syndrome and with Marshall syndrome. A single-nucleotide polymorphism in this gene is also associated with susceptibility to lumbar





ELK Biotechnology

disc herniation. Multiple transcript variants have been identified for this gene. [provided by RefSeq, Nov 2009],



Western blot analysis of CACO2 lysate, antibody was diluted at 1000. Secondary antibody(catalog#:RS0002) was diluted at 1:20000



+86-27-59760950

ELKbio@ELKbiotech.com

www.elkbiotech.com

23-2, No.388 Gaoxin 2nd Road,Wuhan East Lake Hi-tech Development Zone, Hubei , P.R.C